

C:\Users\wang4422.AD\Documents\P164-25-078_E_26_jian.wang\KLUC.rvt 2026-01-30 11:18:21 AM

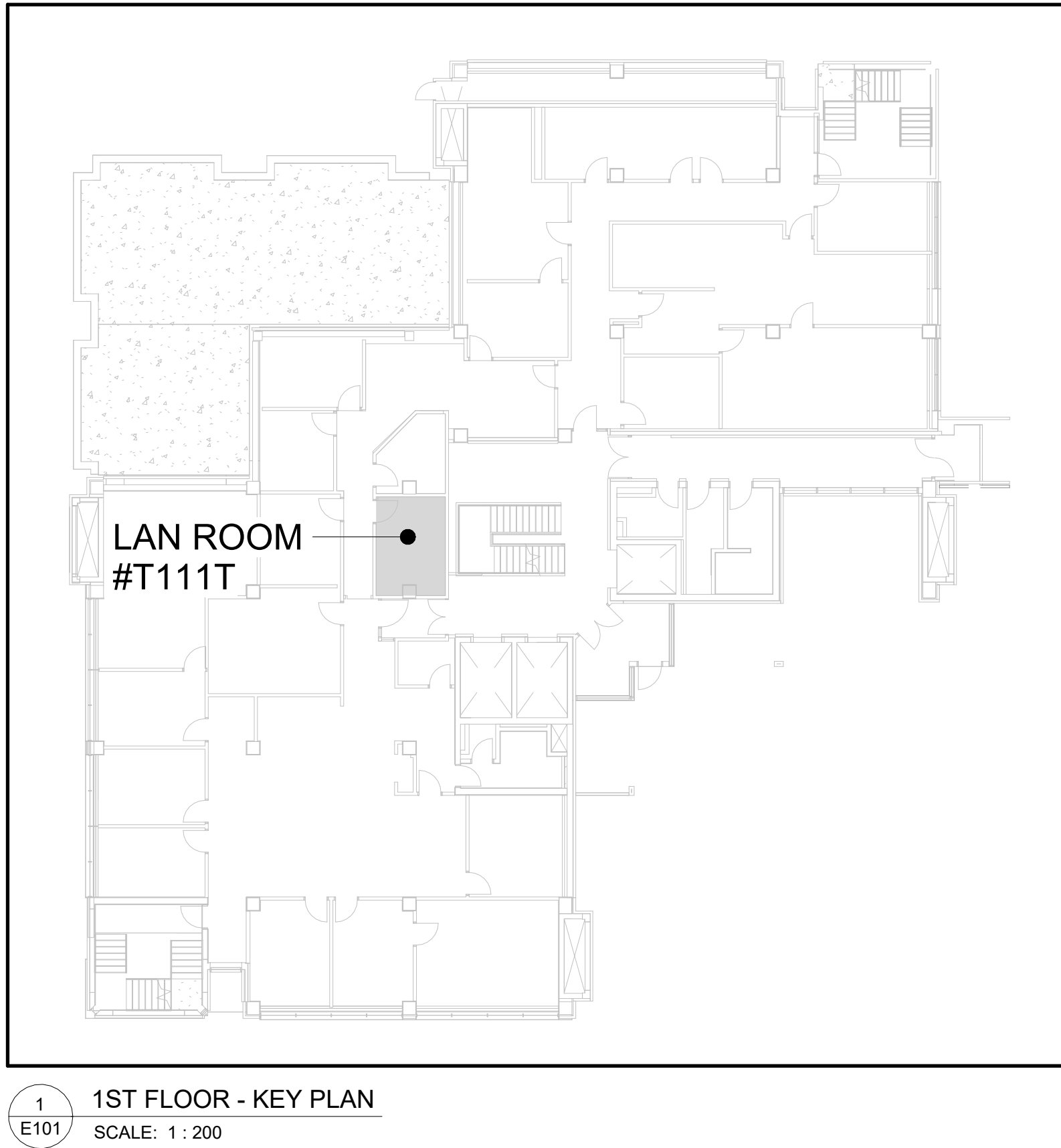
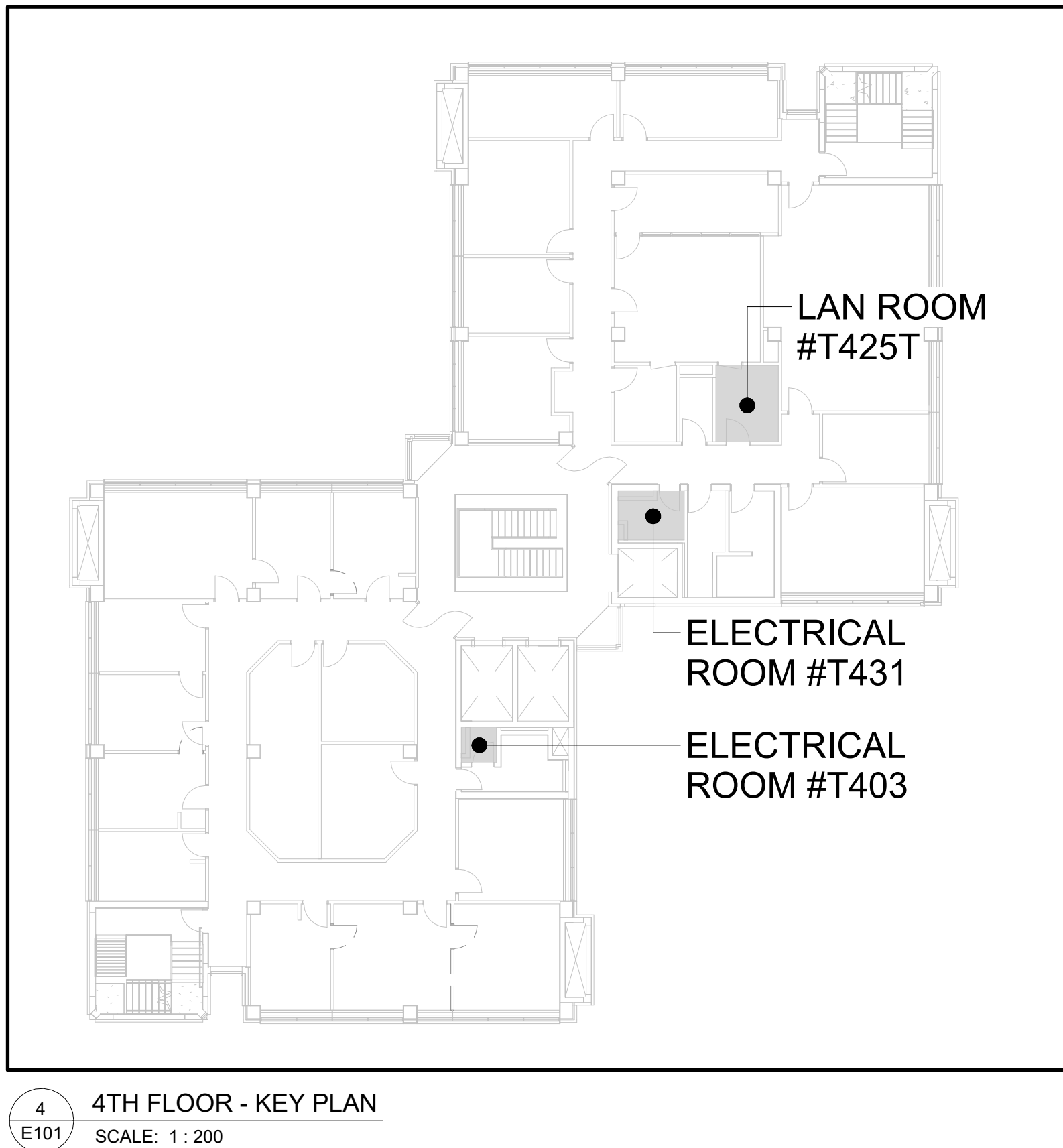
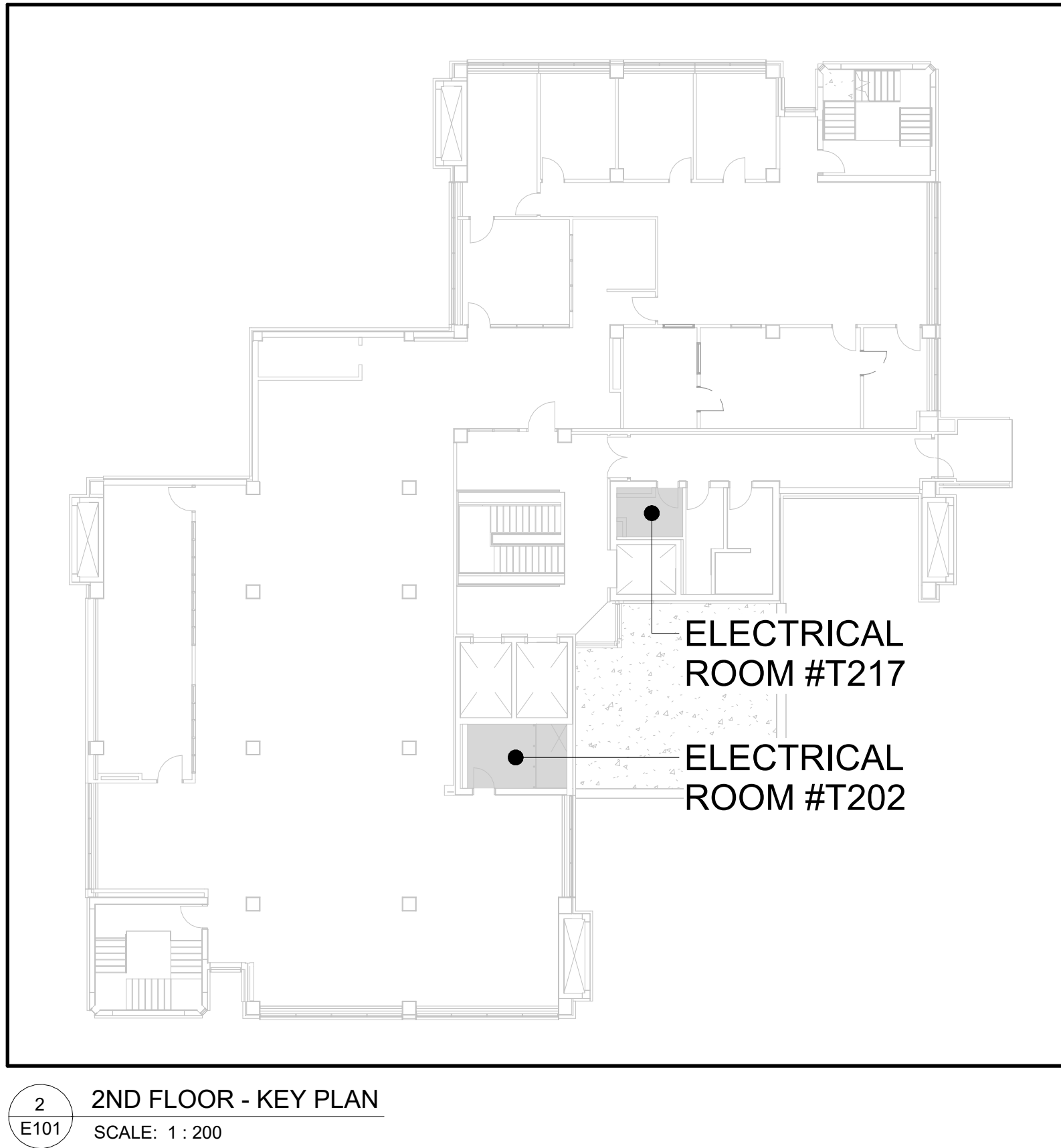
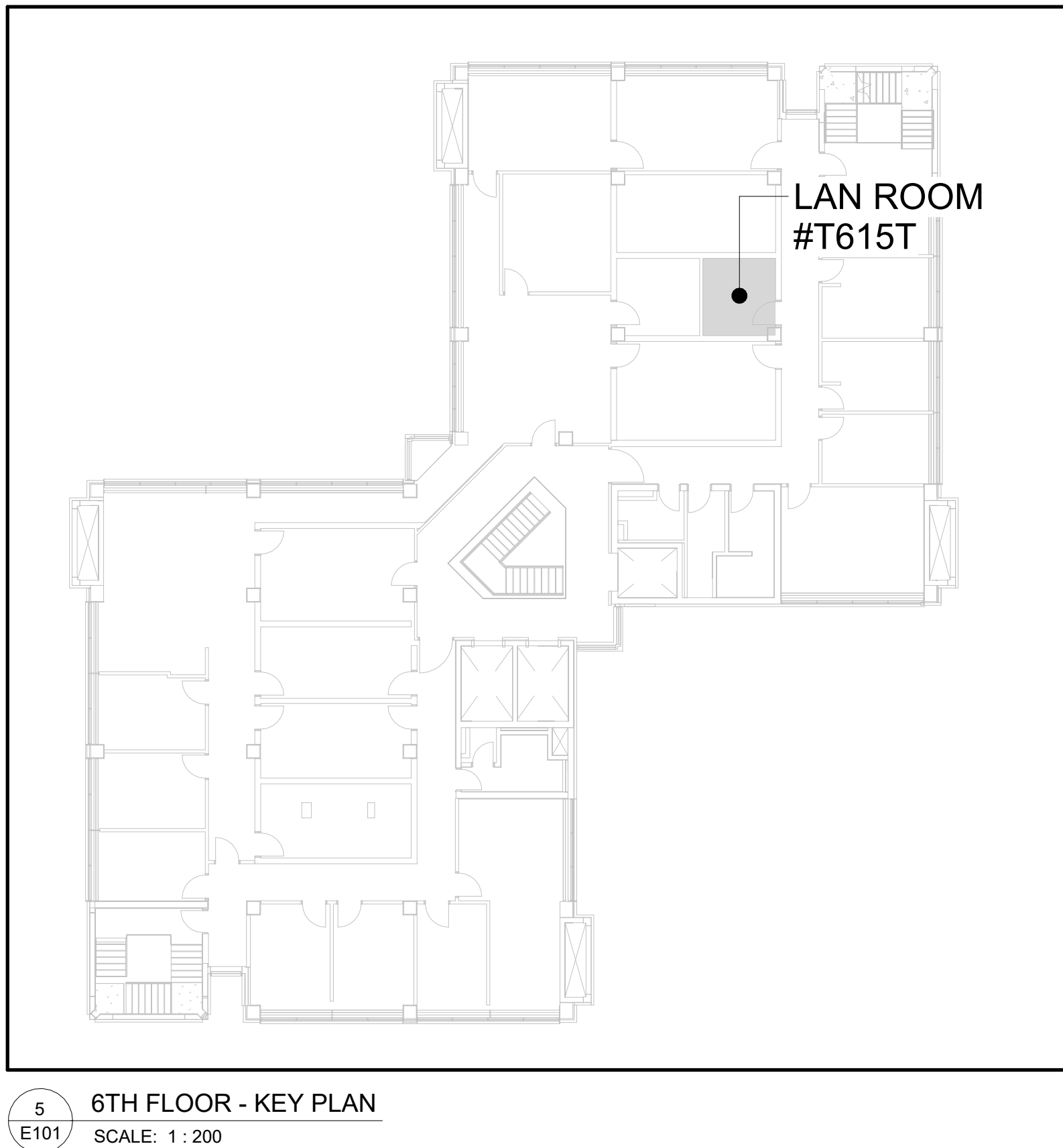
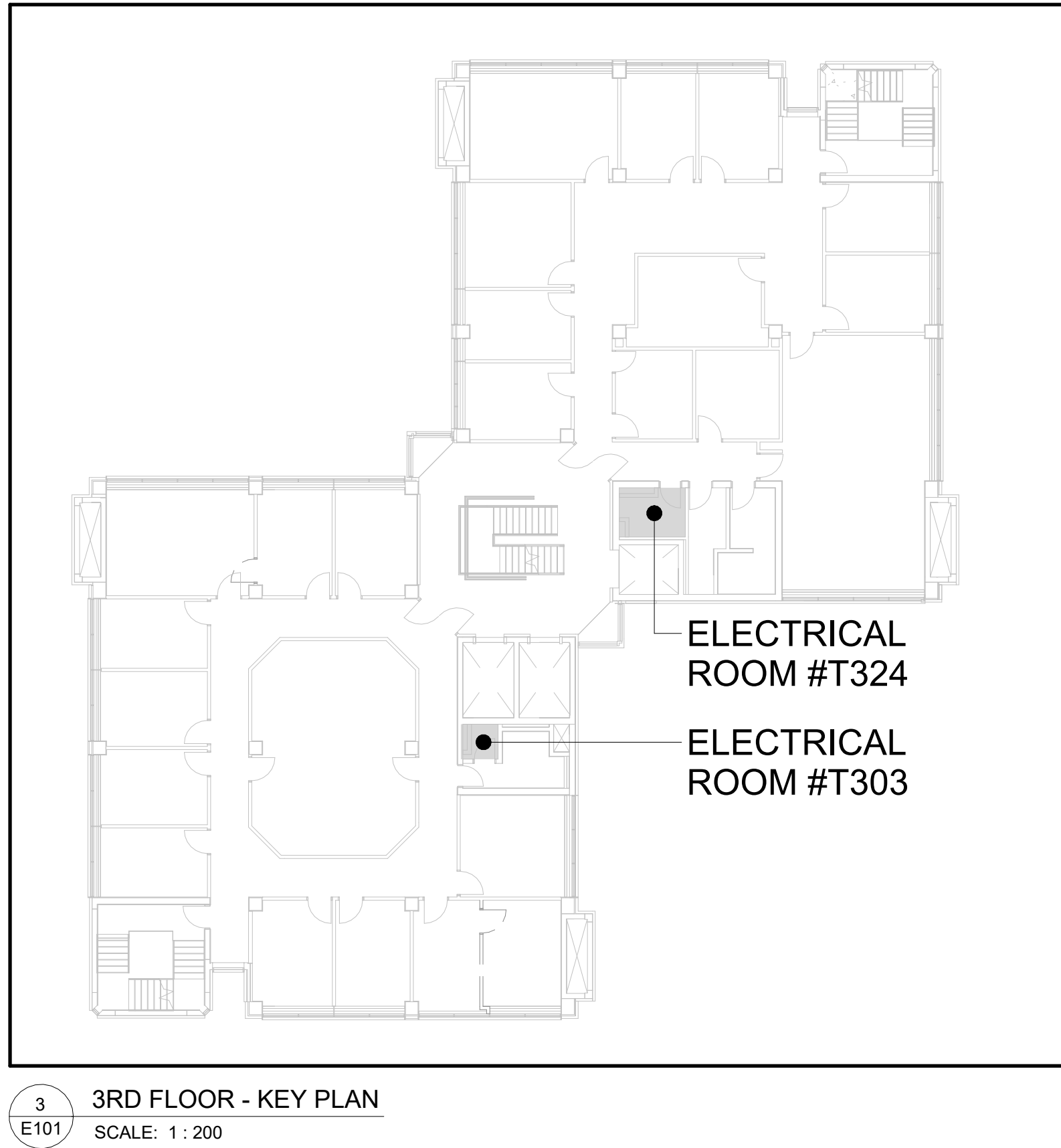
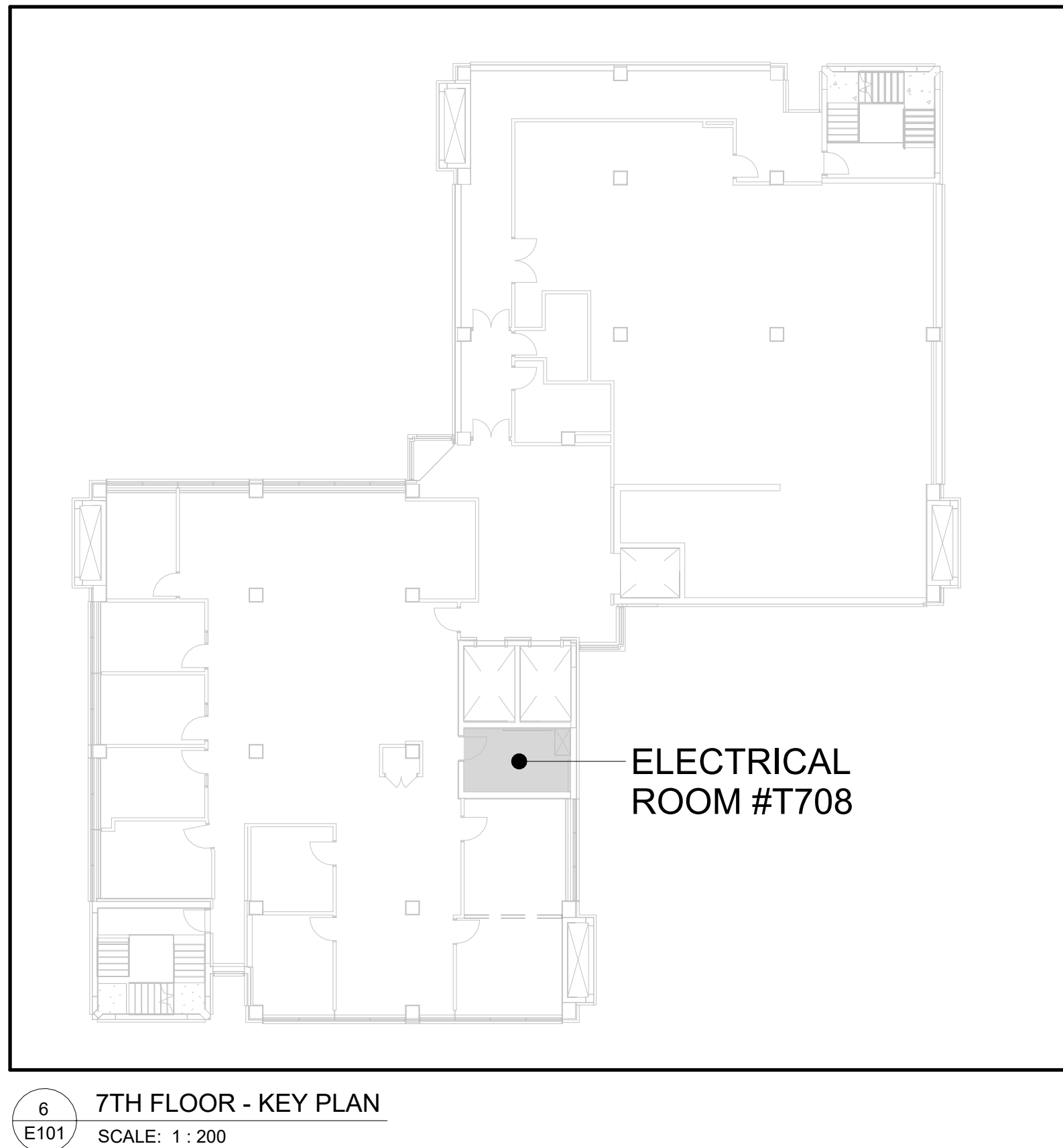
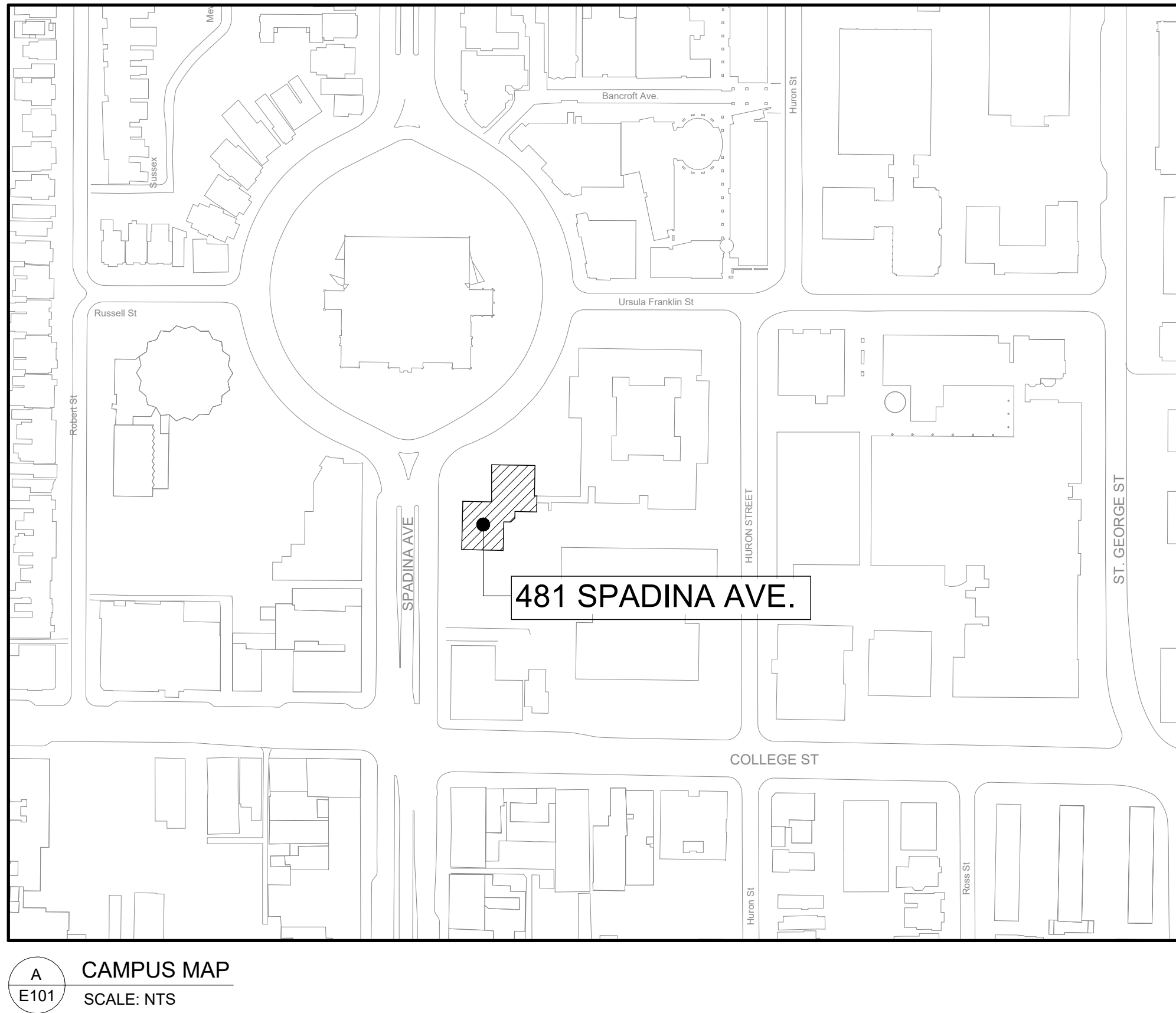
LEGEND OF SYMBOLS			
SYMBOL	DESCRIPTION		
	EXISTING LIGHTING FIXTURE TO BE REMAIN.		
	LIGHTING FIXTURE WIRED ON EMERGENCY CIRCUIT.		
	LIGHT SWITCH		
	CEILING MOUNTED EXIT SIGN (GREEN PICTOGRAM TYPE) LUMACELL, LA SERIES, CAT. #LA-3-WU/4 OR APPROVED EQUAL.		
	WALL MOUNTED EXIT SIGN (GREEN PICTOGRAM TYPE) LUMACELL, LA SERIES, CAT. #LA-3-WU/4 OR APPROVED EQUAL.		
	FIRE ALARM HEAT DETECTOR		
	FIRE ALARM PULL STATION		
	FIRE ALARM SMOKE DETECTOR		
	FIRE ALARM SPEAKER		
	15A, 120V SINGLE RECEPTACLE		
	15A, 120V DUPLEX RECEPTACLE (S-15R)		
	15A, 120V QUAD RECEPTACLE (DOUBLE 15A DUPLEX RECEPTACLES)		
	20A, 120V SINGLE RECEPTACLE		
	20A, 120V DUPLEX RECEPTACLE (S-20R)		
	20A, 120V QUAD RECEPTACLE (DOUBLE 20A DUPLEX RECEPTACLES)		
	SURFACE-MOUNTED FLOOR BOX C/W DUPLEX RECEPTACLE		
	POWER POLE C/W DATA AND 20A QUAD RECEPTACLES (LEGRAND, AM01P-4 SERIES, CAT. #250TH-4 OR APPROVED EQUAL)		
	1P/2P DIRECT CONNECTION		
	3P DIRECT CONNECTION		
			TELEPHONE OUTLET
	SURFACE-MOUNTED FLOOR BOX C/W COMMUNICATION OUTLET		
	WHITE WIRE MESH CABLE TRAY 2'(H) X 4' (W) C/W ALL REQUIRED FITTINGS, CENTER SUPPORT, L BRACKET & ACCESSORIES (NVENT CADDY WIRE BASKET TRAY SERIES CAT. #WB12X4WH)		
	WIRELESS ACCESS POINT		
	ELECTRICAL PANEL		
	JUNCTION BOX / PULL BOX		
EX	EXISTING TO REMAIN	OC	OVER COUNTER
R	EXISTING TO BE REMOVED	UC	UNDER COUNTER
ER	EXISTING TO BE RELOCATED	WP	WEATHER PROOF
RE	EXISTING IN RELOCATED POSITION	AFF	ABOVE FINISHED FLOOR
GFI	GROUND FAULT CIRCUIT INTERRUPTER (AS PER ESA)	CLG	CEILING MOUNTED

SHEET NUMBER	SHEET NAME
E101	ELECTRICAL LEGEND, DRAWING LIST, KEY PLANS & CAMPUS MAP
E102	ELECTRICAL & COMMUNICATION SPECIFICATIONS
E202	LEVEL 2 FLOOR PLAN - ELECTRICAL DEMOLITION LAYOUT
E203	LEVEL 3 FLOOR PLAN - ELECTRICAL DEMOLITION LAYOUT
E204	LEVEL 4 FLOOR PLAN - ELECTRICAL DEMOLITION LAYOUT
E207	LEVEL 7 FLOOR PLAN - ELECTRICAL DEMOLITION LAYOUT
E212	LEVEL 2 FLOOR PLAN - LIGHTING DEMOLITION LAYOUT
E213	LEVEL 3 FLOOR PLAN - LIGHTING DEMOLITION LAYOUT
E214	LEVEL 4 FLOOR PLAN - LIGHTING DEMOLITION LAYOUT
E217	LEVEL 7 FLOOR PLAN - LIGHTING DEMOLITION LAYOUT
E302	LEVEL 2 FLOOR PLAN - NEW ELECTRICAL LAYOUT
E303	LEVEL 3 FLOOR PLAN - NEW ELECTRICAL LAYOUT
E304	LEVEL 4 FLOOR PLAN - NEW ELECTRICAL LAYOUT
E307	LEVEL 7 FLOOR PLAN - NEW ELECTRICAL LAYOUT
E312	LEVEL 2 FLOOR PLAN - NEW LIGHTING LAYOUT
E313	LEVEL 3 FLOOR PLAN - NEW LIGHTING LAYOUT
E314	LEVEL 4 FLOOR PLAN - NEW LIGHTING LAYOUT
E317	LEVEL 7 FLOOR PLAN - NEW LIGHTING LAYOUT
E401	ELECTRICAL ELEVATIONS
E501	DEMOLITION & NEW SINGLE LINE DIAGRAMS
E502	PANEL SCHEDULES
E503	COMMUNICATION DETAILS
E504	ELECTRICAL RACEWAY ROUTING & SECURITY LAYOUT

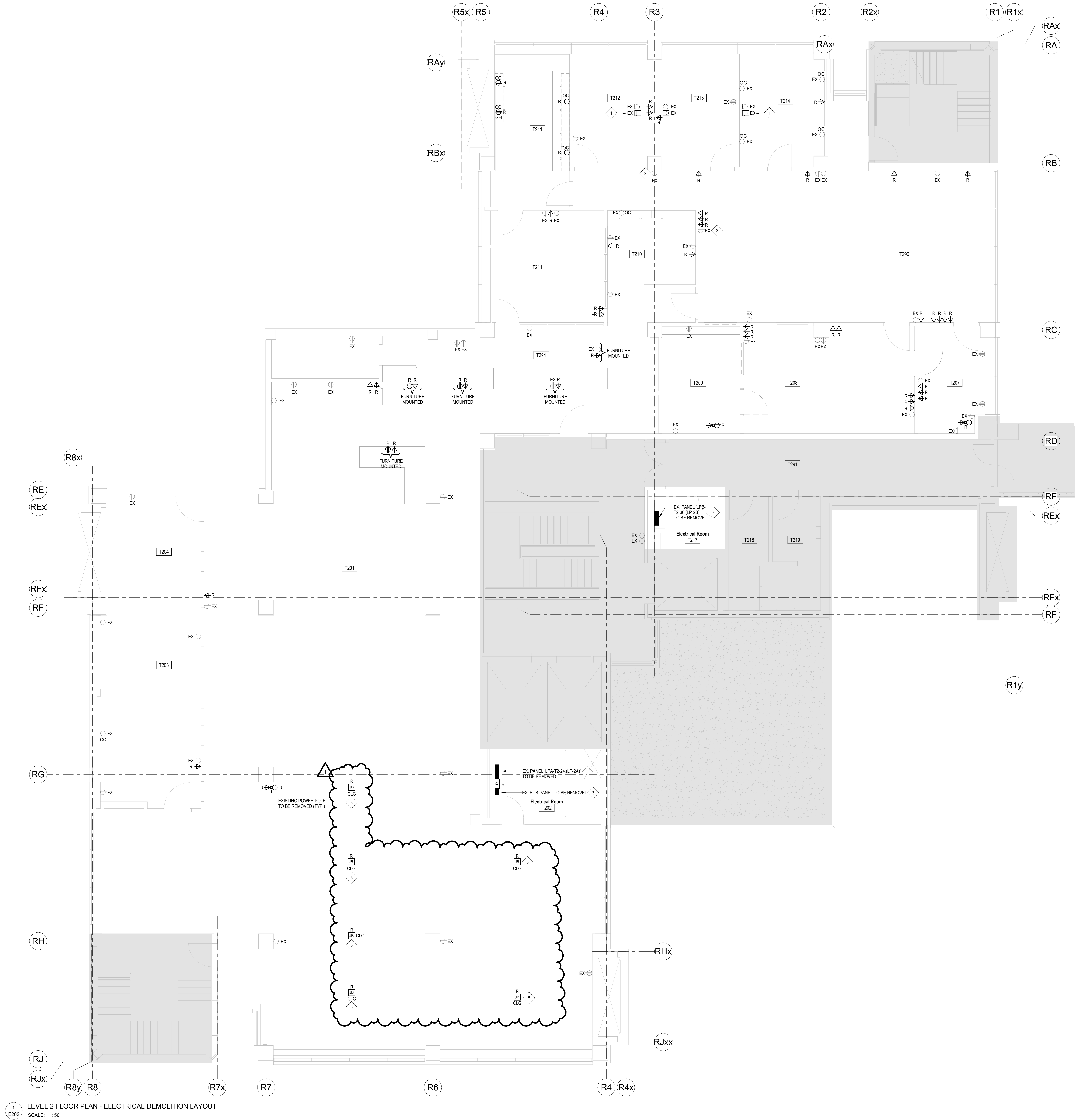
- ELECTRICAL GENERAL NOTES
- CONTRACTOR SHALL VISIT THE SITE TO VERIFY THE SCOPE OF WORK & EXISTING CONDITIONS. CONTRACTOR SHALL ALSO EXAMINE ALL EXISTING CONDITIONS WHICH AFFECT THE WORK, PRIOR TO SUBMITTING TENDER PRICE. NO EXTRAS WILL BE ALLOWED FOR FAILURE TO DO SO.
 - VERIFY FIELD MEASUREMENTS AND CIRCUITING ARRANGEMENTS ARE AS SHOWN ON DRAWINGS.
 - VERIFY THAT ABANDONED WIRING AND EQUIPMENT SERVE ONLY ABANDONED FACILITIES.
 - DEMOLITION DRAWINGS ARE BASED ON CASUAL FIELD OBSERVATION. REPORT DISCREPANCIES TO UNIVERSITY OF TORONTO BEFORE DISTURBING EXISTING INSTALLATION.
 - SCHEDULE & COORDINATE ALL WORK WITH U OF T STAFF AND OTHER TRADES ON SITE.
 - ANY INTERRUPTIONS TO POWER SUPPLY TO EXISTING LIGHTING OR DEVICES SHALL BE COORDINATED ON SITE. REFER TO ARCHITECTURAL & MECHANICAL DRAWINGS FOR FULL SCOPE OF WORK.
 - DISCONNECT ELECTRICAL SYSTEMS IN WALLS, FLOORS, AND CEILINGS SCHEDULED FOR REMOVAL.
 - THE CONTRACTOR TO ENSURE CONTINUITY OF SYSTEMS THROUGH RENOVATION SPACE
 - MODIFY/EXTEND/REPLACE EXISTING CONDUITS/WIRING/BACKBOXES AS REQUIRED FOR THE RELOCATED AND EXISTING TO REMAIN EQUIPMENT/DEVICES FOR FULLY OPERATIONAL SYSTEM.
 - PROVIDE BLANK STAINLESS STEEL COVER PLATES WHERE OUTLETS ARE REMOVED FROM EXISTING WALLS TO REMAIN.
 - REROUTE AS REQUIRED TO MAINTAIN CONTINUITY FOR ALL SYSTEMS TO REMAIN WHICH ARE AFFECTED BY THE DEMOLITION OR ALTERATION.
 - REMOVE ABANDONED WIRING TO SOURCE OF SUPPLY.
 - PROVIDE TEMPORARY WIRING AND CONNECTIONS TO MAINTAIN EXISTING SYSTEMS IN SERVICE DURING CONSTRUCTION. WHEN WORK MUST BE PERFORMED ON ENERGIZED EQUIPMENT OR CIRCUITS, USE PERSONNEL EXPERIENCED IN SUCH OPERATIONS.
 - EXISTING ELECTRICAL SERVICE. MAINTAIN EXISTING SYSTEM IN SERVICE UNTIL NEW SYSTEM IS COMPLETE AND READY FOR SERVICE. DISABLE SYSTEM ONLY TO MAKE SWITCH OVERTS AND CONNECTIONS. FOLLOW UNIVERSITY OF TORONTO PROCEDURES FOR SCHEDULING SHUTDOWNS. MINIMIZE OUTAGE DURATION.
 - REMOVE EXPOSED ABANDONED CONDUIT, INCLUDING ABANDONED CONDUIT ABOVE ACCESSIBLE CEILING SPACE. CUT CONDUIT FLUSH WITH WALLS AND FLOORS, AND PATCH SURFACES AS REQUIRED.
 - DISCONNECT AND REMOVE ABANDONED PANELEBOARDS AND DISTRIBUTION EQUIPMENT, WHERE INDICATED.
 - DISCONNECT AND REMOVE ELECTRICAL DEVICES AND EQUIPMENT SERVING UTILIZATION EQUIPMENT THAT HAS BEEN REMOVED.
 - DISCONNECT AND REMOVE ABANDONED LUMINAIRES. REMOVE BRACKETS, STEMS, HANGERS, AND OTHER ACCESSORIES. RECYCLE ALL ELEMENTS WHERE POSSIBLE. DISPOSE OF HAZARDOUS MATERIALS AT APPROPRIATE FACILITIES.
 - REPAIR ADJACENT CONSTRUCTION AND FINISHES DAMAGED DURING DEMOLITION AND EXTENSION WORK.
 - MAINTAIN ACCESS TO EXISTING ELECTRICAL INSTALLATIONS WHICH REMAIN ACTIVE. MODIFY INSTALLATION OR PROVIDE ACCESS PANEL AS APPROPRIATE.
 - EXTEND EXISTING INSTALLATIONS USING MATERIALS AND METHODS COMPATIBLE WITH EXISTING ELECTRICAL INSTALLATIONS, OR AS SPECIFIED.
 - CLEAN AND REPAIR EXISTING MATERIALS AND EQUIPMENT WHICH REMAIN OR ARE TO BE REUSED.
 - DISCONNECT & REMOVE EXISTING LIGHTING FIXTURES AND ASSOCIATED WIRING & CONDUIT BACK TO JUNCTION BOX/SOURCE AS INDICATED.
 - DISCONNECT & REMOVE EXISTING DATA & TELEPHONE OUTLETS AND ASSOCIATED CABLING BACK TO RESPECTIVE DATA RACK AND TELEPHONE BACKBOARD AS INDICATED.
 - DISCONNECT & REMOVE EXISTING POWER OUTLETS & DEVICES ALONG WITH ASSOCIATED OUTLETS, CONDUITS & WIRING BACK TO THE RESPECTIVE SOURCE OF ORIGIN AS REQUIRED.
 - DISCONNECT & REMOVE ALL ABANDONED CONDUITS, CABLES & LOOSE BX WIRING AS REQUIRED, WHETHER SHOWN ON THIS DRAWING OR NOT. RE-SUPPORT/ARRANGE EXISTING WIRING IN CEILING SPACE TO SATISFY ESA INSPECTION AS REQUIRED.
 - RELOCATE EXISTING WAP TO NEW LOCATION, AS SHOWN ON DRAWINGS. TEST DATA CABLING AS PER DATA CABLING SPECIFICATION INDICATED IN PROJECT SPECIFICATIONS.
 - PROVIDE FIRESTOPPING AT ALL ELECTRICAL PENETRATIONS THROUGH FIRE SEPARATIONS AS REQUIRED TO MAINTAIN THE INTEGRITY OF THE FIRE SEPARATION. REFER TO ARCHITECTURAL DRAWINGS FOR FIRE SEPARATION LOCATIONS AND FIRE RESISTANCE RATING REQUIREMENTS.
 - ALL NEW ELECTRICAL INSTALLATIONS ARE TO BE SURFACE MOUNTED WITH WIREMOLD, UNLESS NOTED OTHERWISE.
 - CONTRACTOR SHALL PERFORM VOLTAGE DROP CALCULATIONS FOR ALL BRANCH CIRCUITS (LIGHTING AS WELL AS POWER) AND SHALL MAINTAIN VOLTAGE DROP WITHIN PERMISSIBLE LIMITS AS PER O.E.S.C. REQUIREMENTS AND PROVIDE PROPER WIRE SIZES, ACCORDINGLY, PRIOR TO COMMENCING OF ROUGH-IN INSTALLATION. THE VOLTAGE DROP CALCULATIONS SHALL BE BASED ON MAXIMUM CIRCUIT AMPACITY.
 - ALL RECEPTACLES SHALL BE IDENTIFIED USING PROFESSIONAL GRADE, HIGH GLOSS LABELS INDICATING CIRCUIT NUMBER & PANEL SOURCE.
 - PROVIDE UPDATED AND NEW "TYPED" PANEL DIRECTORY CARD FOR EXISTING & NEW PANELS IN THE AREA OF WORK AS REQUIRED.
 - EXISTING FIRE ALARM PANEL (NOTIFIER, MODEL #3030) IS LOCATED IN CACF ROOM #1131 AT 33 URSULA FRANKLIN ST.

DIVISION OF RESPONSIBILITY - DEMOLITION			
CATEGORY	DESCRIPTION	MECHANICAL	ELECTRICAL
WIRING, BACK-BOXES & CONDUITS	LINE VOLTAGE POWER WIRING AND ASSOCIATED BACK-BOXES & CONDUITS		•
	LINE & LOW VOLTAGE CONTROL WIRING AND ASSOCIATED BACK-BOXES & CONDUITS	•	
EQUIPMENT & DEVICES	DISCONNECT SWITCHES, VFD'S, STARTERS & LINE VOLTAGE CONTROL DEVICES		•
	LOW VOLTAGE CONTROL DEVICES	•	
COMMUNICATIONS	HEAT TRACING, SNOWMELT SYSTEMS, ELECTRIC COILS & PACKAGED ELECTRIC SPACE HEATING EQUIPMENT	•	
	BAS DATA CABLING, PATCH CABLING & ASSOCIATED CONDUITS FROM MECHANICAL EQUIPMENT CONTROLLER TO FACILITIES & SERVICES (F&S) NETWORK SWITCH	•	
DIVISION OF RESPONSIBILITY - NEW WORK			
CATEGORY	DESCRIPTION	MECHANICAL	ELECTRICAL
WIRING, BACK-BOXES & CONDUITS	LINE VOLTAGE POWER WIRING AND ASSOCIATED BACK-BOXES & CONDUITS		PROVIDE
	LINE & LOW VOLTAGE CONTROL WIRING AND ASSOCIATED BACK-BOXES & CONDUITS	PROVIDE	
	BACK-BOXES FOR STEP-DOWN TRANSFORMERS & RELAYS SERVING MECHANICAL EQUIPMENT		PROVIDE
EQUIPMENT & DEVICES	VFD'S, STARTERS, SPEED CONTROLLERS, & LINE VOLTAGE CONTROL DEVICES SERVING MECHANICAL EQUIPMENT	SUPPLY	INSTALL
	LOW VOLTAGE CONTROL DEVICES	PROVIDE	
	LOW VOLTAGE STEP-DOWN TRANSFORMERS & RELAYS SERVING MECHANICAL EQUIPMENT	SUPPLY	INSTALL
	HEAT TRACING, ELECTRIC COILS & PACKAGED ELECTRIC SPACE HEATING EQUIPMENT	PROVIDE	
COMMUNICATIONS	ELECTRIC SNOWMELT SYSTEMS		PROVIDE
	BAS DATA CABLING, PATCH CABLING & ASSOCIATED CONDUITS FROM MECHANICAL EQUIPMENT CONTROLLER TO FACILITIES & SERVICES (F&S) NETWORK SWITCH	PROVIDE	

NOTES:
1. LOW VOLTAGE IS DEFINED AS BELOW 30 VOLTS.
2. ALL ELECTRICAL WORK INCLUDING CONTROLS WORK SHALL BE PERFORMED BY THE CONTRACTOR ON BEHALF OF THE OWNER THAT FALLS UNDER THE PROVISIONS OF ANY COLLECTIVE AGREEMENTS BY WHICH THE OWNER IS BOUND, OR WHICH THE OWNER IS CONTRACTUALLY REQUIRED TO APPLY TO THE PROJECT. SHALL IN EACH CASE BE PERFORMED BY EMPLOYEES COVERED BY THE APPLICABLE COLLECTIVE AGREEMENT. REFER TO SPECIFICATIONS SECTION 00 21 13 - INSTRUCTIONS TO BIDDERS, AND CDDC2 SUPPLEMENTARY CONDITIONS.



C:\Users\wang4422.AD\Documents\P164-25-078_E_26_jian.wang.KLUC.rvt 2026-01-30 11:30:46 AM



1 LEVEL 2 FLOOR PLAN - ELECTRICAL DEMOLITION LAYOUT
E202 SCALE: 1 : 50

DEMOLITION KEYED NOTES

- 1 DISCONNECT & REMOVE EXISTING DATA CABLE BACK TO SOURCE. PROVIDE BLANK STAINLESS STEEL COVERPLATE AND MAKE GOOD.
- 2 PROVIDE NEW BLANK STAINLESS STEEL COVERPLATE FOR THE INDICATED RECEPTACLE.
- 3 DISCONNECT & REMOVE EXISTING PANEL C/W MAIN FEEDER & CONDUIT. TRANSFER EXISTING BRANCH CIRCUITS FROM EXISTING PANEL TO NEW PANEL. REFER TO SINGLE LINE DIAGRAM & PANEL SCHEDULES FOR DETAILS. MODIFY AND/OR EXTEND EXISTING CONDUIT & WIRING AS REQUIRED.
- 4 DISCONNECT & REMOVE EXISTING PANEL C/W MAIN FEEDER. TRANSFER EXISTING BRANCH CIRCUITS FROM EXISTING PANEL TO NEW PANEL. UTILIZED EXISTING CONDUIT TO FEED THE NEW PANEL. REFER TO SINGLE LINE DIAGRAM & PANEL SCHEDULES FOR DETAILS. MODIFY AND/OR EXTEND EXISTING CONDUIT & WIRING AS REQUIRED.
- 5 DISCONNECT & REMOVE ABANDONED CEILING WIRING C/W CONDUIT AND BOX BACK TO SOURCE.



University of Toronto
UNIVERSITY PLANNING,
DESIGN & CONSTRUCTION

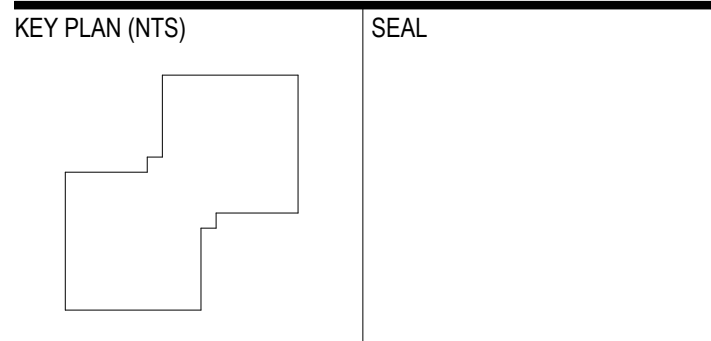
Design & Engineering

255 McCaul Street, 4th Floor, Toronto, Ontario M5T 1W7

This drawing is the property of the University of Toronto, and must be returned upon completion of the work. All information shown on this drawing is for use on this specific project. Contractor must verify all dimensions on the job and report any discrepancies to the Architect before proceeding with the work.

1	ADDENDUM #1	2026-01-30
	ISSUED FOR TENDER	2026-01-21
	ISSUED FOR F&S REVIEW	2026-01-16
	ISSUED FOR PERMIT	2026-01-14
	ISSUED FOR CD	2025-11-07
	ISSUED FOR 100% SCHEMATIC DESIGN	2025-09-25

REV. DESCRIPTION DATE



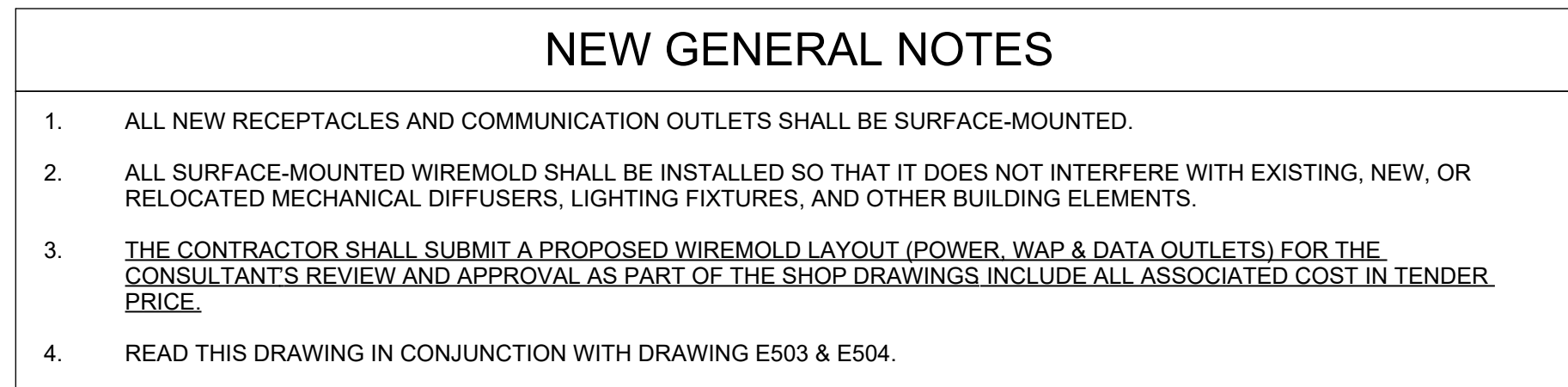
PROJECT TITLE
UNIVERSITY OF TORONTO
Tower FOI Relocation

481 Spadina Ave
DRAWING SHEET TITLE
**LEVEL 2 FLOOR PLAN -
ELECTRICAL
DEMOLITION LAYOUT**

DRAWN BY: JW SCALE: 1 : 50
REVIEWED BY: SG DATE CREATED: 2025-09

UNIVERSITY PROJECT NUMBER/NORTH POINT
P164-25-078

DRAWING NUMBER
E202
REV. NUMBER
1



- ## NEW KEYED NOTES
- | | |
|---|--|
| A | UTILIZE EXISTING RECEPTACLE TO FEED THE NEW SURFACE-MOUNTED RECEPTACLE. CONTRACTOR TO SAFELY DISCONNECT EXISTING RECEPTACLE DEVICE, PROVIDE NEW SURFACE-MOUNTED DEVICE BOX WITH BLANK COVER PLATE OVER THE EXISTING BACKBOX & EXTEND EXISTING WIRING TO THE NEW RECEPTACLE CAN NEW WIREMOLD & DEVICE BOXES. PROVIDE PROPER LABELING FOR NEW RECEPTACE AS REQUIRED. REFER TO FLOOR PLAN |
| B | OUTLET TO BE INSTALLED RECESSED IN NEW WALL CAVITY & DATA CABLE TO BE FED THROUGH THE WALL FROM ADJACENT ROOM. |
| C | DATA CABLE FOR THIS OUTLET TO BE FED THROUGH THE WALL FROM ADJACENT ROOM. |
| D | PROVIDE POWER CONNECTIONS TO INDOOR AC UNIT WITH NEW LOCAL DISCONNECT SWITCH, WIRING AND SURFACE-MOUNTED WIREMOLD. COORDINATE LOCATION WITH MECHANICAL CONTRACTOR ON SITE PRIOR TO ROUGH-INS. |
| E | PROVIDE POWER CONNECTIONS TO INDOOR AC UNIT WITH NEW LOCAL DISCONNECT SWITCH, WIRING AND SURFACE-MOUNTED WIREMOLD. COORDINATE LOCATION WITH MECHANICAL CONTRACTOR ON SITE PRIOR TO ROUGH-INS. CONDUIT RUN SHALL BE PARALLEL WITH MECHANICAL PIPING. |
| F | IT RECEPTACLE TO BE INSTALLED INSIDE THE IT ENCLOSURE. COORDINATE WITH COMMUNICATION CONTRACTOR PRIOR TO ROUGH-INS & INSTALLATION. |
| G | PROVIDE J-HOOKS ABOVE CEILING BETWEEN MESH CABLE TRAY AND SURFACE-MOUNTED WIREMOLD FOR DATA CABLING. COORDINATE INSTALLATION LOCATION WITH COMMUNICATIONS CONTRACTOR. |



University of Toronto
UNIVERSITY PLANNING,
DESIGN & CONSTRUCTION

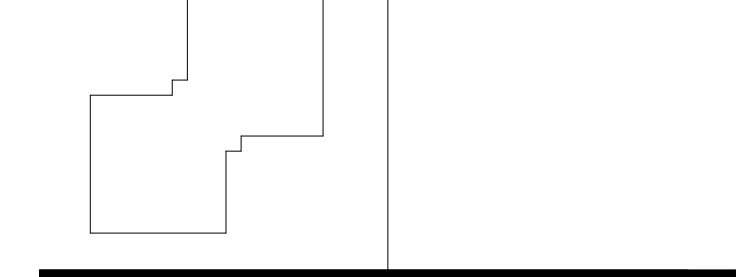
Design & Engineering

255 McCaul Street, 4th Floor, Toronto, Ontario M5T 1W7

This drawing is the property of the University of Toronto, and must be returned upon completion of the work. All information shown on this drawing is for use on this specific project. Contractor must verify all dimensions on the job and report any discrepancies to the Architect before proceeding with the work.

1	ADDENDUM #1	2026-01-30
	ISSUED FOR TENDER	2026-01-21
	ISSUED FOR F&S REVIEW	2026-01-16
	ISSUED FOR PERMIT	2026-01-14
	ISSUED FOR DD	2025-11-07
	ISSUED FOR 100% SCHEMATIC DESIGN	2025-09-25
REV.	DESCRIPTION	DATE

KEY PLAN (NTS)	SEAL
----------------	------



PROJECT TITLE:
UNIVERSITY OF TORONTO
Tower FOI Relocation

481 Spadina Ave

DRAWING SHEET TITLE


LEVEL 2 FLOOR PLAN -

NEW ELECTRICAL LAYOUT

DRAWN BY: JW/GDP	SCALE: As indicated
------------------	---------------------

REVIEWED BY: SG	DATE CREATED: 2025-09
-----------------	-----------------------

UNIVERSITY PROJECT NUMBER	NORTH POINT
---------------------------	-------------

P164-25-078 

DRAWING NUMBER	REV. NUMBER
----------------	-------------

E302	1
-------------	----------



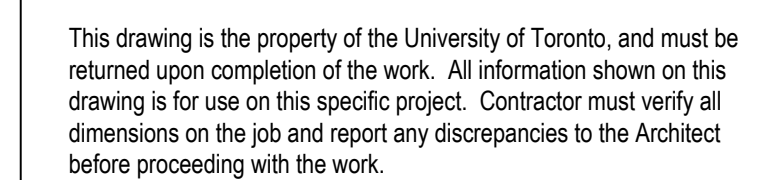
1. ALL NEW RECEPTACLES AND COMMUNICATION OUTLETS SHALL BE SURFACE-MOUNTED.
2. ALL SURFACE-MOUNTED WIREMOLD SHALL BE INSTALLED SO THAT IT DOES NOT INTERFERE WITH EXISTING, NEW, OR RELOCATED MECHANICAL, DIFFUSERS, LIGHTING FIXTURES, AND OTHER BUILDING ELEMENTS.
3. THE CONTRACTOR SHALL SUBMIT A PROPOSED WIREMOLD LAYOUT (POWER, WAP & DATA OUTLETS) FOR THE CONSULTANT'S REVIEW AND APPROVAL AS PART OF THE SHOP DRAWINGS INCLUDING ALL ASSOCIATED COST IN TENDER PRICE.
4. READ THIS DRAWING IN CONJUNCTION WITH DRAWING E503 & E504.

A CONNECT INDICATED RECEPTACLE TO EXISTING BRANCH-WIRING AS REQUIRED.

B UTILIZE EXISTING BACKBOX TO FEED THE NEW SURFACE-MOUNTED RECEPTACLE. CONTRACTOR TO SAFELY DISCONNECT EXISTING RECEPTACLE DEVICE. PROVIDE NEW SURFACE-MOUNTED DEVICE BOX WITH BLANK COVER PLATE OVER THE EXISTING BACKBOX & EXTEND EXISTING WIRING TO THE NEW RECEPTACLE C/W NEW WIREMOLD & DEVICE BOXES. PROVIDE PROPER LABELING FOR NEW RECEPTACLE AS REQUIRED. REFER TO ELECTRICAL PLAN.

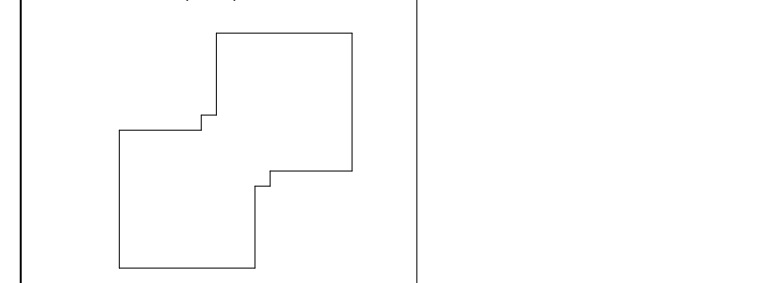
C IT RECEPTACLE IS TO BE INSTALLED INSIDE THE IT ENCLOSURE. COORDINATE WITH COMMUNICATION CONTRACTOR PRIOR TO ROUGH-IN INSTALLATION.

D PROVIDE SMOKE & ACOUSTICAL PATHWAY (EZ PATH_CAT #NE3Z3-W) FOR WALL PENETRATION.



1	ADDENDUM #1	2026-01-30
	ISSUED FOR TENDER	2026-01-21
	ISSUED FOR F&S REVIEW	2026-01-16
	ISSUED FOR PERMIT	2026-01-14
	ISSUED FOR DD	2025-11-07
	ISSUED FOR 100% SCHEMATIC DESIGN	2025-09-25
REV.	DESCRIPTION	DATE

KEY PLAN (NTS)	SEAL
----------------	------

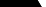


PROJECT TITLE:
UNIVERSITY OF TORONTO
Tower FOI Relocation

481 Spadina Ave
DRAWING SHEET TITLE
**LEVEL 3 FLOOR PLAN -
NEW ELECTRICAL
LAYOUT**

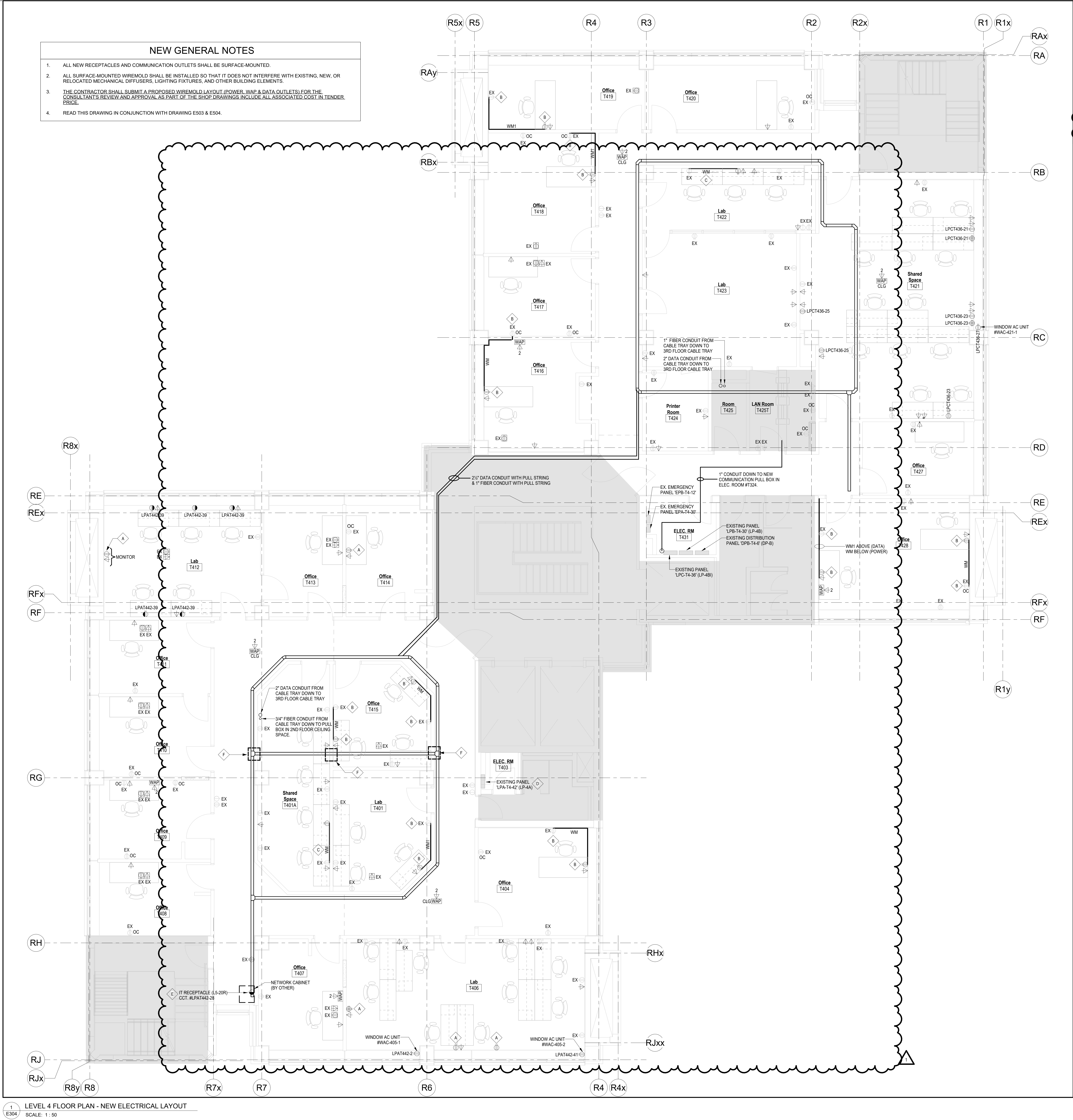
DRAWN BY: JW	SCALE: As indicated
--------------	---------------------

REVIEWED BY: SG	DATE CREATED: 2025-09
-----------------	-----------------------

UNIVERSITY PROJECT NUMBER	NORTHPOINT
P164-25-078	

DRAWING NUMBER	REV. NUMBER
E303	1

C:\Users\wang4422.AD\Documents\P164-25-078_E_26_jian.wang.KLUC.rvt 2026-01-30 11:43:40 AM



1 E304 LEVEL 4 FLOOR PLAN - NEW ELECTRICAL LAYOUT
SCALE: 1:50

NEW KEYED NOTES

- A CONNECT INDICATED RECEPTACLE TO EXISTING BRANCH WIRING AS REQUIRED.
- B UTILIZE EXISTING RECEPTACLE TO FEED THE NEW SURFACE-MOUNTED RECEPTACLE. CONTRACTOR TO SAFELY DISCONNECT EXISTING RECEPTACLE DEVICE. PROVIDE NEW SURFACE-MOUNTED DEVICE BOX WITH BLANK COVER PLATE OVER THE EXISTING BACKBOX & EXTEND EXISTING WIRING TO THE NEW RECEPTACLE C/W NEW WIREMOLD & DEVICE BOXES. PROVIDE PROPER LABELING FOR NEW RECEPTACLE AS REQUIRED. REFER TO FLOOR PLAN.
- C UTILIZE EXISTING RECEPTACLE TO FEED THE NEW SURFACE-MOUNTED RECEPTACLE. CONTRACTOR TO EXTEND EXISTING WIRING TO THE NEW RECEPTACLE C/W NEW WIREMOLD & DEVICE BOXES. PROVIDE PROPER LABELING FOR NEW RECEPTACLE AS REQUIRED. EXISTING RECEPTACLE IS TO REMAIN. REFER TO FLOOR PLAN.
- D ELECTRICAL CONTRACTOR TO VERIFY EXISTING LOADS ON LIGHTING BRANCH CIRCUITS (CCT. #2, 4, 6, 8, 10, 12, 14, & 16). WHERE FEASIBLE, COMBINE TWO (2) LIGHTING CIRCUITS INTO ONE (1) CIRCUIT TO FREE SPARE CIRCUITS AND BREAKERS. UTILIZE ONE (1) OF THE FREED SPARE CIRCUITS TO FEED THE NEW WINDOW AC UNIT IN LAB #405.
- E IT RECEPTACLE TO BE INSTALLED INSIDE THE IT ENCLOSURE. COORDINATE WITH COMMUNICATION CONTRACTOR PRIOR TO ROUGH-INS & INSTALLATION.
- F PROVIDE SMOKE & ACOUSTICAL PATHWAY (EZ PATH, CAT.#NEZ33-W) FOR WALL PENETRATION.



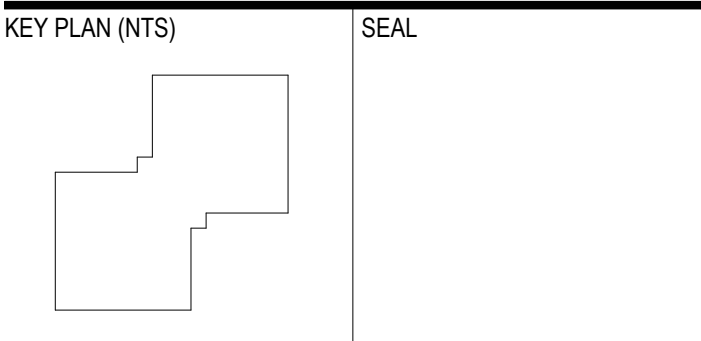
University of Toronto
UNIVERSITY PLANNING,
DESIGN & CONSTRUCTION

Design & Engineering

255 McCaul Street, 4th Floor, Toronto, Ontario M5T 1W7

This drawing is the property of the University of Toronto, and must be returned upon completion of the work. All information shown on this drawing is for use on this specific project. Contractor must verify all dimensions on the job and report any discrepancies to the Architect before proceeding with the work.

1	ADDENDUM #1	2026-01-30
	ISSUED FOR TENDER	2026-01-21
	ISSUED FOR FAS REVIEW	2026-01-16
	ISSUED FOR PERMIT	2026-01-14
	ISSUED FOR CD	2025-11-07
	ISSUED FOR 100% SCHEMATIC DESIGN	2025-09-25
REV.	DESCRIPTION	DATE



PROJECT TITLE
UNIVERSITY OF TORONTO
Tower FOI Relocation

481 Spadina Ave
DRAWING SHEET TITLE
**LEVEL 4 FLOOR PLAN -
NEW ELECTRICAL
LAYOUT**

DRAWN BY: JW/GDP
REVIEWED BY: SG
UNIVERSITY PROJECT NUMBER: NORTH POINT
P164-25-078

DRAWING NUMBER
E304
REV. NUMBER
1

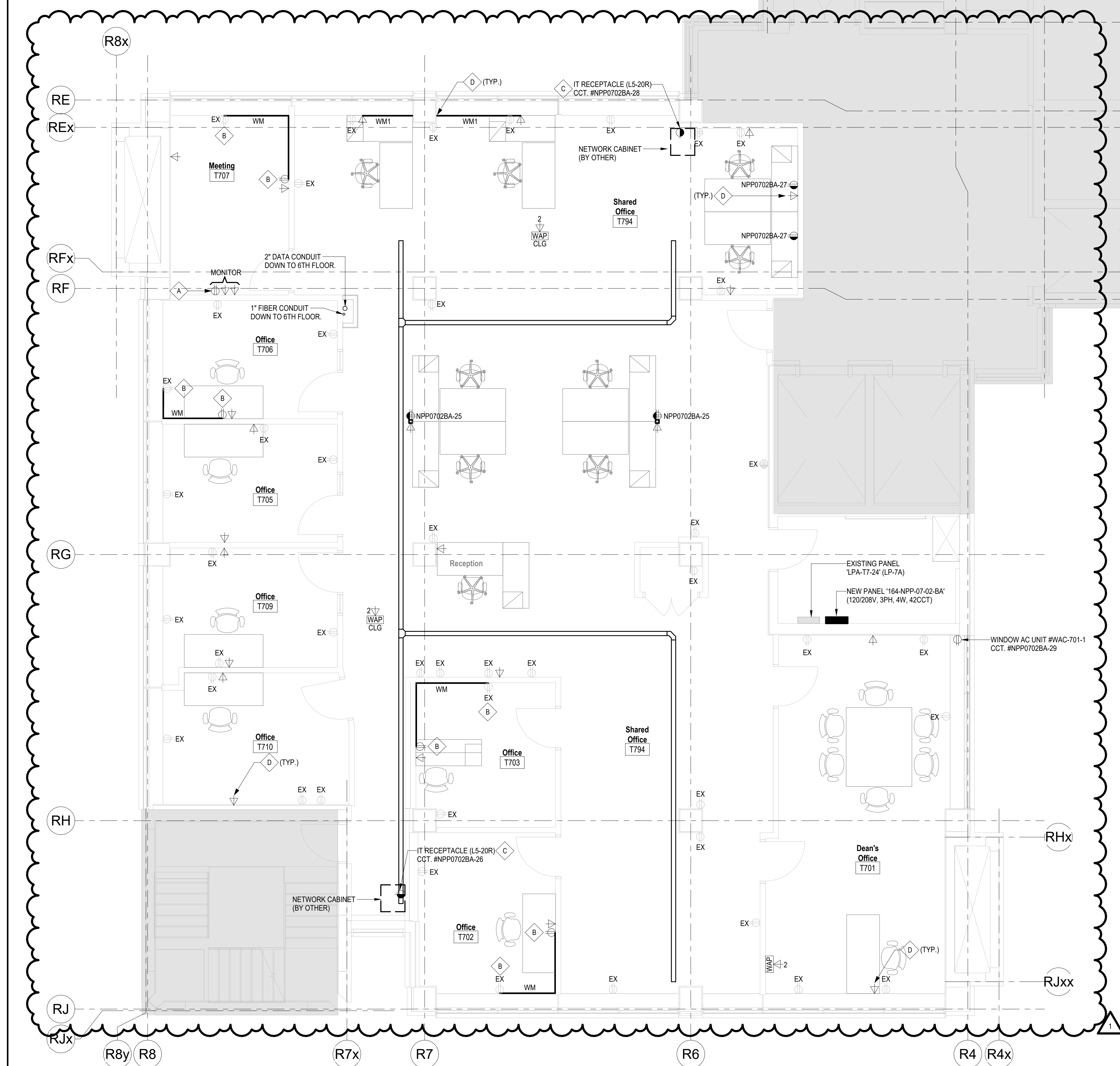
1. ALL NEW RECEPTACLES AND COMMUNICATION OUTLET'S SHALL BE SURFACE-MOUNTED.
2. ALL SURFACE-MOUNTED WIREMOLD SHALL BE INSTALLED SO THAT IT DOES NOT INTERFERE WITH EXISTING, NEW, OR RELOCATED MECHANICAL, DIFFUSERS, LIGHTING FIXTURES, AND OTHER BUILDING ELEMENTS.
3. THE CONTRACTOR SHALL SUBMIT A PROPOSED WIREMOLD LAYOUT (POWER, WAP & DATA OUTLETS) FOR THE CONSULTANT'S REVIEW AND APPROVAL AS PART OF THE SHOP DRAWINGS. INCLUDE ALL ASSOCIATED COST IN TENDER PRICE.
4. READ THIS DRAWING IN CONJUNCTION WITH DRAWING E503 & E504.

A. CONNECT INDICATED RECEPTACLE TO EXISTING BRANCH WIRING AS REQUIRED.

B. UTILIZE EXISTING RECEPTACLE TO FEED THE NEW SURFACE-MOUNTED RECEPTACLE. CONTRACTOR TO SAFELY DISCONNECT EXISTING RECEPTACLE DEVICE, PROVIDE NEW SURFACE-MOUNTED DEVICE BOX WITH BLANK COVER PLATE OVER THE EXISTING BACKBOX & EXTEND EXISTING WIRING TO THE NEW RECEPTACLE C/W NEW WIREMOLD & DEVICE BOXES. PROVIDE PROPER LABELING FOR NEW RECEPTACLE AS REQUIRED. REFER TO FLOOR PLAN.

C. IT RECEPTACLE TO BE INSTALLED INSIDE THE IT ENCLOSURE. COORDINATE WITH COMMUNICATION CONTRACTOR PRIOR TO ROUGH-IN & INSTALLATION.

D. PROVIDE 3/4"X6" ABOVE CEILING BETWEEN MESH CABLE TRAY AND SURFACE-MOUNTED WIREMOLD FOR DATA CABLING. COORDINATE INSTALLATION CLING WITH COMMUNICATIONS CONTRACTOR.



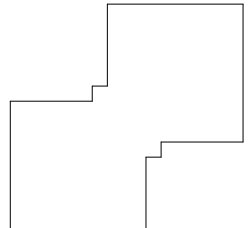
1
E307

LEVEL 7 FLOOR PLAN - NEW ELECTRICAL LAYOUT

SCALE: 1 : 50

1	ADDENDUM #1	2026-01-30
	ISSUED FOR TENDER	2026-01-21
	ISSUED FOR F&S REVIEW	2026-01-16
	ISSUED FOR PERMIT	2026-01-14
	ISSUED FOR DO	2025-11-07
	ISSUED FOR 100% SCHEMATIC DESIGN	2025-09-25
REV.	DESCRIPTION	DATE

KEY PLAN (NTS)	SEAL
----------------	------



PROJECT TITLE:
UNIVERSITY OF TORONTO
Tower FOI Relocation

481 Spadina Ave

DRAWING SHEET TITLE

**LEVEL 7 FLOOR PLAN -
NEW ELECTRICAL
LAYOUT**

DRAWN BY: JW	SCALE: As indicated
--------------	---------------------

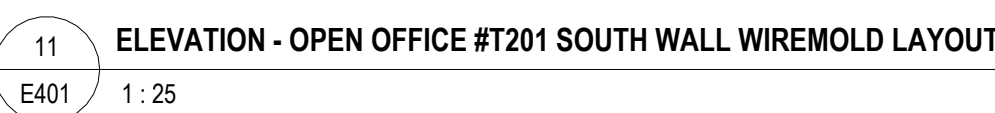
REVIEWED BY: SG	DATE CREATED: 2025-09
-----------------	-----------------------

UNIVERSITY PROJECT NUMBER NORTH POINT
P164-25-078

DRAWING NUMBER	REV. NUMBER
----------------	-------------

E307	1
-------------	----------

A UTILIZE EXISTING RECEPTACLE TO FEED THE NEW SURFACE-MOUNTED RECEPTACLE. CONTRACTOR TO SAFELY DISCONNECT EXISTING RECEPTACLE DEVICE. PROVIDE NEW SURFACE-MOUNTED DEVICE BOX WITH BLANK COVER PLATE OVER THE EXISTING BACKBOX & EXTEND EXISTING WIRING TO THE NEW RECEPTACLE C/W NEW WIREMOLD & DEVICE BOXES. PROVIDE PROPER LABELING FOR NEW RECEPTACLE AS REQUIRED. REFER TO FLOOR PLAN.



10 ELEVATION - ROOM #T428 WEST WALL WIREMOLD LAYOUT (TYPICAL)
E401 1:25

9 ELEVATION - ROOM #T428 EAST WALL WIREMOLD LAYOUT
E401 1:25



7
E401

ELEVATION - OFFICE #T209 SOUTH WALL WIREMOLD LAYOUT

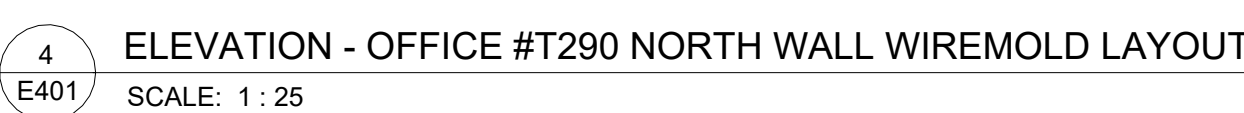
SCALE: 1:25

6 ELEVATION - OFFICE #T208 WEST WALL WIREMOLD LAYOUT
E401 SCALE: 1:25

5
E401

ELEVATION - OFFICE #T208 EAST WALL WIREMOLD LAYOUT

SCALE: 1 : 25



3 ELEVATION - OFFICE #T290 EAST WALL WIREMOLD LAYOUT
E401 SCALE: 1 : 25

2 ELEVATION - OFFICE #T290 SOUTH WALL WIREMOLD LAYOUT
401 SCALE: 1 : 25

1 ELEVATION - KITCHEN #T212 WEST WALL WIREMOLD LAYOUT
E401 SCALE: 1 : 25

[illegible]

1	ADDENDUM #1	2026-01-30
	ISSUED FOR TENDER	2026-01-21
	ISSUED FOR F&S REVIEW	2026-01-16
	ISSUED FOR PERMIT	2026-01-14
	ISSUED FOR DO	2025-11-07
	ISSUED FOR 100% SCHEMATIC DESIGN	2025-09-25
REV.	DESCRIPTION	DATE

KEY PLAN (NTS)	SEAL
----------------	------

PROJECT TITLE:
UNIVERSITY OF TORONTO
Tower FOI Relocation

481 Spadina Ave
DRAWING SHEET TITLE
**ELECTRICAL
ELEVATIONS**

DRAWN BY: GDP	SCALE: 1 : 25
REVIEWED BY: JW	DATE CREATED: 2025-09

P164-25-078

DRAWING NUMBER	REV. NUMBER
E401	1

C:\Users\wang4422\AD\Documents\P164-25-078_E_26_jian.wang.KLUC.nrt

2026-01-30 11:16:08 AM

UNIVERSITY OF TORONTO											
164-NPP-02-02-AA							DATE MODIFIED:				
BLDG #:		164		PANEL TAG							
CONNECTED LOAD (W)	DEMAND FACTOR	TOTAL DEMAND	DESCRIPTION (Item, Room Number[s]):	BKR (A)	CT	CT BKR (A)	DESCRIPTION (Item, Room Number[s]):	CONNECTED LOAD (W)	DEMAND FACTOR	TOTAL DEMAND	
0		0	PLUGS JIFFY POLE RM T201	15A	1 A	2	20A T201 - WORKSTATIONS (X4)	1200	0.80	960	
0		0	PLUGS JIFFY POLE	15A	3 B	4	20A T201 - WORKSTATIONS (X4)	1200	0.80	960	
0		0	LIGHTS AUDIO VIDEO RM	15A	5 C	6	20A T201 - WORKSTATIONS (X4)	1200	0.80	960	
0		0	EXISTING LOADS	15A	7 A	8	20A T201 - WORKSTATIONS (X4)	1200	0.80	960	
0		0	PLUGS RM T201	15A	9 B	10	20A T201 - WORKSTATIONS (X4)	1200	0.80	960	
0		0	PLUG LIBRARY	15A	11 B	12	20A T201 - WORKSTATIONS (X2)	600	0.80	480	
0		0	PLUS & LIGHTS	15A	13 A	14	20A T201 - WORKSTATIONS (X4)	1200	0.80	960	
0		0	PLUGS JIFFY POLE RM T201	15A	15 B	16	20A T204 - PRINTER	600	0.50	250	
0		0	PLUGS OPEN OFFICE JIFFY POLE	15A	17 C	18	T201 - INDOOR AC UNITS (IDU-201-1, IDU-201-2 & IDU-201-3)	100	0.50	50	
0		0	PLUGS JIFFY POLE RM T201	15A	19 A	20		2P	100	0.50	50
0		0	PLUG	15A	21 B	22	30A T201 - OUTDOOR CONDENSING UNIT	3000	0.50	1500	
0		0	EXISTING LOADS	15A	23 C	24	2P	3000	0.50	1500	
0		0	EXISTING LOADS	15A	25 B	26				0	
0		0	EXISTING LOADS	15A	27 C	28				0	
0		0	EXISTING LOADS	20A	29 B	30				0	
0		0	EXISTING LOADS	20A	31 A	32				0	
0		0	EXISTING LOADS	20A	33 B	34	15A SPARE			0	
0		0	PLUG LIBRARY	20A	35 C	36	20A SPARE			0	
0		0	HK PLUG	20A	37 A	38	20A SPARE			0	
0		0	EXISTING LOADS	20A	39 B	40	20A T201 - IT RECEPTACLE	1000	0.50	500	
0		0	EXISTING LOADS	20A	41 C	42	20A T201 - IT RECEPTACLE	1000	0.50	500	
BLDG:		164		FLOOR:		2		ROOM:		T202	
RATINGS:		100A		120/208V		3 PHASE		4 WIRE		S.C.: 10KALC	
FED FROM:		PANEL TAG:		BLDG #:		ROOM #:		BREAKER SIZE		FEEDER SIZE:	
		DPA-T1-10 (DP-A)		164		100A		483 AWG CU + GND			

164-NPP-02-02-AA.xlsx

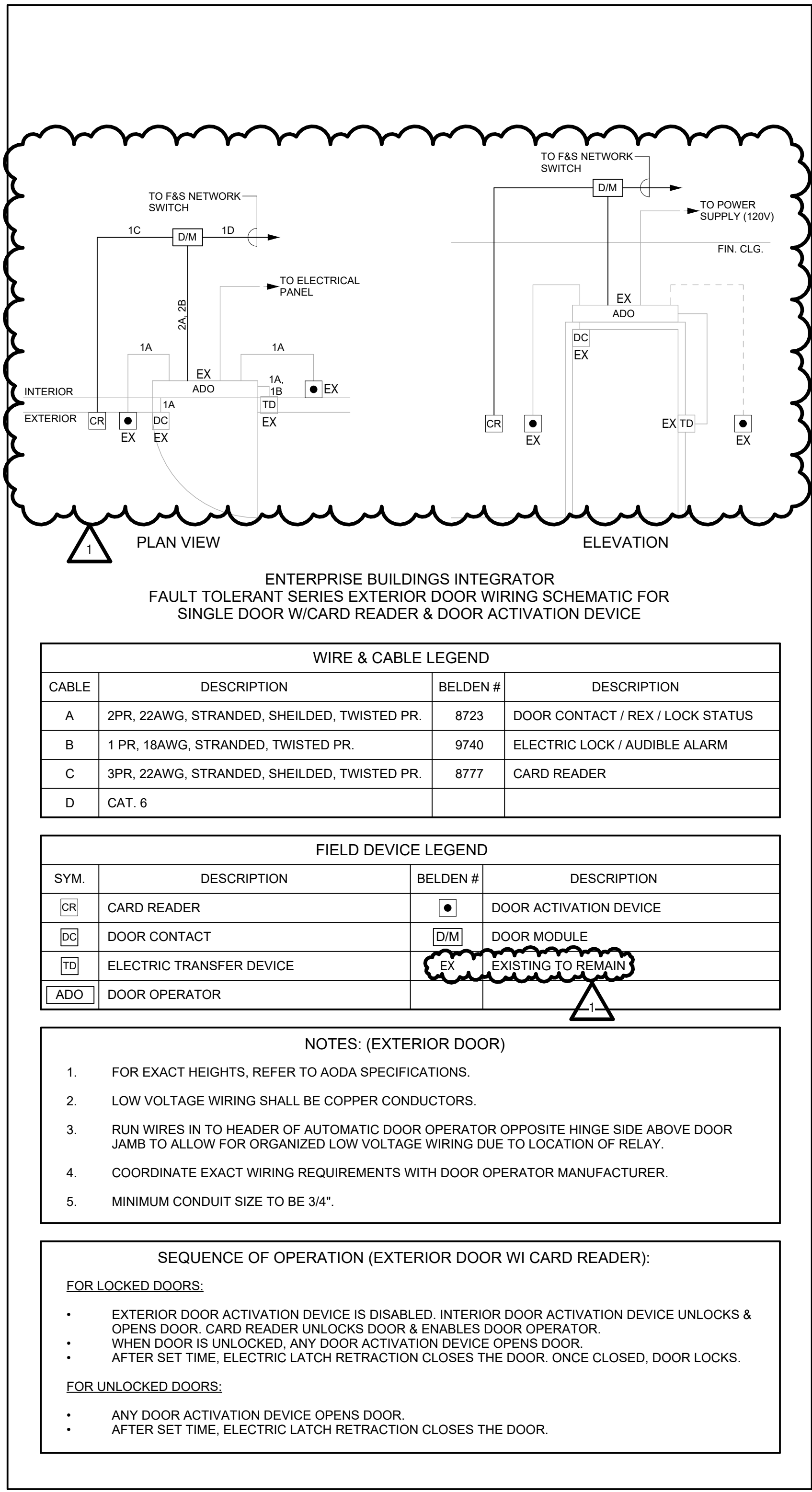
UNIVERSITY OF TORONTO											
164-NPP-02-02-BA											
BLDG #:		164		PANEL TAG:		DATE MODIFIED:					
CONNECTED LOAD (W)	DEMAND FACTOR	TOTAL DEMAND	DESCRIPTION (Item, Room Number[s]):	BKR (A)	CT	CT	BKR (A)	DESCRIPTION (Item, Room Number[s]):	CONNECTED LOAD (W)	DEMAND FACTOR	TOTAL DEMAND
0		0	LIGHTS RM T216 & XEROX RM	15A	1	A 2	15A	LIGHTS IN STAIRWELL			0
0		0	PLUGS IN OFFICE	15A	3	B 4	15A	LIGHTS IN LOBBY			0
0		0	LIGHTS OFFICE	15A	5	C 6	15A	PLUG RM T211			0
0		0	LIGHTS RM T215	15A	7	A 8	15A	PLUG LIBRARY, OPEN AREA			0
0		0	LIGHTS RM T214	15A	9	B 10	15A	LIGHTS RM T212			0
0		0	LIGHTS CORRIDOR	15A	11	C 12	15A	LIGHTS RM T213			0
0		0	UNIT HEATER IN HALLWAY	15A	13	A 14	15A	LIGHTS RM T217, T218 & T219			0
0		0	PLUGS RM T215, T214 & T213	15A	15	B 16	15A	PLUGS RM T215			0
0		0	EXISTING LOADS	15A	17	C 18	15A	PLUGS RM T215 & T214			0
0		0	HK PLUGS RM T216, OFFICE SPACE, OPEN AREA	15A	19	A 20	15A	PLUGS RM T215			0
0		0	HK PLUGS RM T216, OFFICE SPACE, OPEN AREA	15A	21	B 22	15A	PLUGS RM T212			0
0		0	PLUG XEROX MACH. & RM T216, T217, T218	15A	23	C 24	15A	PLUGS RM T211			0
0		0	DOOR ALARM	15A	25	A 26	15A	SHOW CASE LIGHTS			0
0		0	ELECTRICAL ROOM PLUG	15A	27	B 28	15A	PLUG 20AP XEROX MACHINE			0
0		0	HANDICAP DOOR	15A	29	C 30	15A	PLUG RM T316			0
0		0	PLUG RM T316	15A	31	A 32	20A	EXISTING LOADS			0
0		0	EXISTING LOADS	15A	33	B 34	15A	EXISTING LOADS			0
0		0	EXISTING LOADS	15A	35	C 36	20A	EXISTING LOADS			0
1200	0.80	960	T200 - WORKSTATIONS (X4)	20A	37	A 38	20A	T212 - MICROWAVE	1000	0.80	800
1000	0.50	500	T200 - IT RECEPTACLE	20A	39	B 40	20A	T212 - MICROWAVE	1000	0.80	800
870	0.50	435	T200 - INDOOR AC UNIT	15A	41	C 42	20A	T212 - COFFEE MACHINE	1000	0.80	800
870	0.50	435	T200 - INDOOR AC UNIT	15A	43	A 44	15A	T212 - FRIDGE	500	0.80	400
0		0	SPARE	15A	45	B 46	15A	SPARE			0
0		0	SPARE	15A	47	C 48	15A	SPARE			0
0		0	SPARE	15A	49	A 50	15A	SPARE			0
0		0	SPACE		51	B 52		SPACE			0
0		0	SPACE		53	C 54		SPACE			0
0		0	SPACE		55	A 56		SPACE			0
0		0	SPACE		57	B 58		SPACE			0
0		0	SPACE		59	C 60		SPACE			0
BLDG: 164 FLOOR: 2 ROOM: 1217 NEW TAG: 164-NPP-02-02-BA											
RATINGS: ~A 120/208V 3 PHASE 4 WIRE S.C.: 10KALC											
FED FROM: PANEL TAG: BLDG #: ROOM #: BREAKER SIZE FEEDER SIZE: DPA-T1-10 (DP-A) 164 100A 483 AWG CU + GND											

UNIVERSITY OF TORONTO																
BLDG #:			164	FANEL TAG:		LPA-T3-42 (LP-3A)		DATE MODIFIED:								
CONNECTED LOAD (W)	DEMAND FACTOR	TOTAL DEMAND	DESCRIPTION (Item, Room Number(s)):		BKR (A)	CT	CT BKR (A)	DESCRIPTION (Item, Room Number(s)):		CONNECTED LOAD (W)	DEMAND FACTOR	TOTAL DEMAND				
0		0	LIGHTS RM T305		15A	1 A	2	LIGHTS RM T306				0				
0		0	LIGHTS RM T306		15A	3 B	4	LIGHTS RM T311 & PLUGS				0				
0		0	LIGHTS RM T307		15A	5 C	6	LIGHTS RM T311				0				
0		0	LIGHTS RM T303, T304		15A	7 A	8	LIGHTS RM T311 & PLUGS				0				
0		0	LIGHTS RM T301		15A	9 B	10	LIGHTS RM T312				0				
0		0	LIGHTS RM T301		15A	11 C	12	LIGHTS RM T311				0				
0		0	HALLWAY LIGHTS		15A	13 A	14	PLUGS RM T304				0				
0		0	HALLWAY LIGHTS		15A	15 B	16	LIGHTS RM T314				0				
0		0	B.B. HEATER RM T308		15A	17 C	18	LIGHTS RM T314 & RAZOR PLUG RM T302				0				
0		0	HK PLUG		15A	19 A	20	PLUGS RM T311				0				
0		0	HK PLUG		20A	21 B	22	PLUGS RM T312				0				
0		0	PLUGS RM T311		15A	23 C	24	EXISTING LOADS				0				
0		0	PLUGS RM T306, T307		15A	25 A	26	FLOOR PLUGS T305				0				
0		0	PLUGS RM T301		15A	27 B	28	HALLWAY PRINTER				0				
0		0	PLUGS RM T301		15A	29 C	30	PLUGS RM T306				0				
0		0	PLUGS RM T304		15A	31 A	32	PLUGS RM T306				0				
0		0	PLUGS RM T304		15A	33 B	34	PLUGS RM T301				0				
0		0	PLUGS RM T303		15A	35 C	36	PLUGS RM T312				0				
1200	0.80	960	T301 - WORKSTATIONS (X4)		20A	37 A	38	PLUGS RM T312				0				
900	0.80	720	T301 - WORKSTATIONS (X2) & TV		20A	39 B	40	PLUGS RM T312				0				
1000	0.50	500	T301 - IT RECEPTACLE		20A	41 C	42	SPACE				0				
BLDG:			164		FLOOR:		3		ROOM:		1303		NEW TAG:			
RATINGS:			100A		120/208V		3 PHASE		4 WIRE		S.C.:					
FED FROM:			PANEL TAG:		BLDG #:		ROOM #:		BREAKER SIZE		FEEDER SIZE:					
			DPB-T4-6 (DP-B)		164				100A		1431					

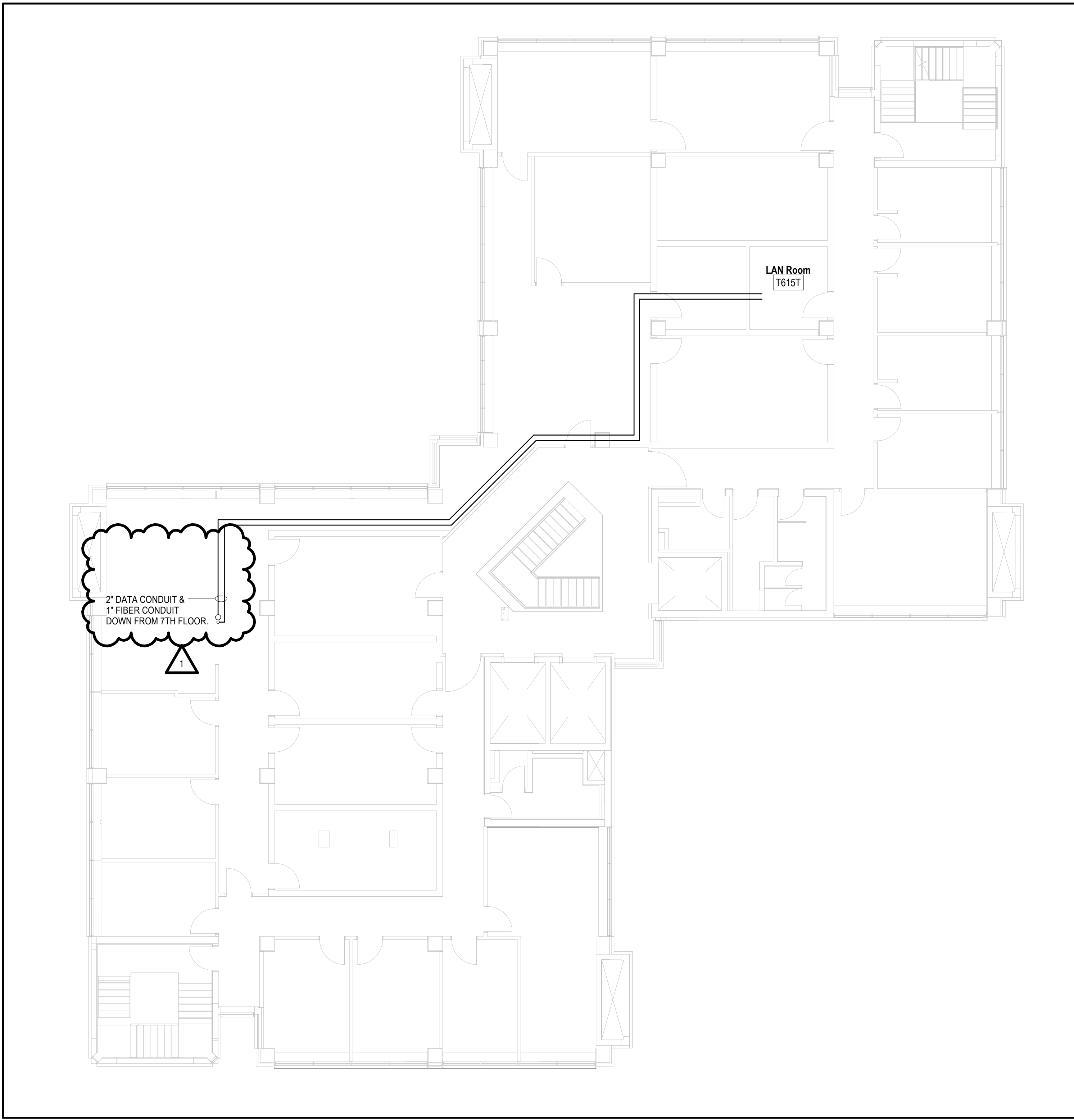
UNIVERSITY OF TORONTO										
LPB-T3-42 (LP-3B)										
BLDG #: 164			PANEL TAG:		DATE MODIFIED:					
CONNECTED LOAD (W)	DEMAND FACTOR	TOTAL DEMAND	DESCRIPTION (Item, Room Number[s]):	BKR (A)	CT	CT BKR (A)	DESCRIPTION (Item, Room Number[s]):	CONNECTED LOAD (W)	DEMAND FACTOR	TOTAL DEMAND
0		0	LIGHTS RM T321, T324, T325, T326	15A	1 A 2	15A	LIGHTS RM T315A & LOBBY			0
0		0	LIGHTS RM T321	15A	3 B 4	15A	LIGHTS RM T315			0
0		0	LIGHTS RM T321	15A	5 C 6	15A	LIGHTS RM T316			0
0		0	LIGHTS RM T320 & T320A	15A	7 A 8	15A	PLUGS & LIGHTS RM T315			0
0		0	PLUGS & LIGHTS T320	15A	9 B 10	15A	PLUGS RM T316			0
0		0	LIGHTS RM T320 & HALLWAY	15A	11 C 12	15A	LIGHTS RM T318			0
0		0	HALLWAY LIGHTS	15A	13 C 14	15A	PLUGS & LIGHTS RM T319			0
0		0	LIGHTS RM T320 & T322	15A	15 A 16	15A	PLUGS RM T320, T320A & T318			0
0		0	PLUGS RM T315 & T315A	15A	17 B 18	15A	PLUGS RM T320			0
0		0	HALLWAY LIGHTS	15A	19 C 20	15A	HK PLUG			0
0		0	PLUGS RM T321	15A	21 B 22	15A	PLUGS RM T320			0
0		0	PLUGS RM T318-20-23	15A	23 A 24	20A	FLOOR PLUG RM T315			0
0		0	FLOOR PLUGS HALLWAY	15A	25 B 26	30A	EXISTING LOADS			0
0		0	PLUGS RM T320 & T324	15A	27 C 28	20A	EXISTING LOADS			0
0		0	SPARE	15A	29 A 30	2P				0
0		0	PLUGS RM T321 & T322	15A	31 B 32	15A	PLUGS RM T327			0
0		0	PLUGS RM T320A & T321	15A	33 C 34	15A	PLUGS RM T327			0
0		0	EXISTING LOADS	15A	35 A 36	15A	PLUGS RM T327			0
0		0	EXISTING LOADS	15A	37 B 38	15A	PLUGS RM T327			0
0		0	EXISTING LOADS	15A	39 C 40	15A	PLUGS RM T327			0
0		0	EXISTING LOADS	15A	41 A 42	20A	XEROX			0
0		0	EXISTING LOADS	15A	43 B 44	20A	HEATER RM T317			0
600	0.80	480	T322 - WORKSTATION	15A	45 A 46	15A	T321 - WINDOW AC UNIT	870	0.50	435
1200	0.80	960	T328 - RECEPTACLES (X2)	20A	47 B 48	20A	T328 - IT CABINET	1000	0.50	500
1000	0.80	800	T321 - IT CABINET	20A	49 C 50		SPACE			0
BLDG: 164 FLOOR: 3 ROOM: 164 NEW TAG: 164-NPP-02-02-BA										
RATINGS: 100A 120/208V 3 PHASE 4 WIRE S.C.: 10KALC										
FED FROM: PANEL TAG: BLDG #: ROOM #: BREAKER SIZE FEEDER SIZE: DPB-T4-6 (DP-B) 164 100A 483 AWG CU + GND										

UNIVERSITY OF TORONTO										
LPA-T4-42 (LP-4A)										
BLDG #:		164		PANEL TAG:		DATE MODIFIED:				
CONNECTED LOAD (W)	DEMAND FACTOR	TOTAL DEMAND	DESCRIPTION (Item, Room Number[s]):	BKR (A)	CT	CT BKR (A)	DESCRIPTION (Item, Room Number[s]):	CONNECTED LOAD (W)	DEMAND FACTOR	TOTAL DEMAND
0		0	LIGHTS RM T408	15A	1 A 2	15A	T405 - WINDOW AC UNIT	870	0.50	435
0		0	LIGHTS RM T408	15A	3 B 4	15A	LIGHTS RM T408 & T409			0
0		0	LIGHTS RM T407	15A	9 B 6	15A	LIGHTS RM T410			0
0		0	LIGHTS RM T404 & T403	15A	7 A 8	15A	LIGHTS RM T411			0
0		0	EXISTING LOADS	15A	9 B 10	15A	LIGHTS RM T412			0
0		0	LIGHTS RM T401	15A	11 12	15A	LIGHTS RM T413			0
0		0	HALLWAY LIGHTS	15A	13 A 14	15A	LIGHTS RM T414			0
0		0	HALLWAY LIGHTS	15A	15 B 16	15A	LIGHTS RM T415			0
0		0	PRINTER HALL	15A	17 B 18	15A	PLUG RM T408 & T409			0
0		0	HK PLUG & LIGHT T401A	15A	19 A 20	15A	PLUG RM T410			0
0		0	HK PLUG & RAZOR PLUG T403	15A	21 B 22	15A	PLUG RM T409			0
0		0	PLUG RM T404 & T406	15A	23 B 24	15A	PLUG RM T412 & T414			0
0		0	PLUG RM T408	15A	25 A 26	15A	PLUG RM T414			0
0		0	PLUG RM T408	15A	27 B 28	20A	T401A - IT CABINET	1000	0.50	500
0		0	PLUG RM T406 & T407	15A	29 B 30	15A	EXISTING LOADS			0
0		0	PLUG RM T415	15A	31 A 32	15A	FLOOR PLUG RM T411, T412 & T413			0
0		0	PLUG RM T401 & T401A	15A	33 B 34	15A	PLUG RM T404			0
0		0	PLUG RM T415	15A	35 B 36	15A	FLOOR PLUG RM T407			0
0		0	PLUG RM T415	15A	37 A 38	15A	FLOOR PLUG RM T408			0
0		0	PLUG RM T415	15A	39 B 40	2P	FLOOR PLUG RM T409 & T410			0
1500	0.80	1200	T415 - WORKSTATIONS (X5)	20A	41 B 42	15A	EXISTING LOADS			0
870	0.80	696	T405 - WINDOW AC UNIT	15A	41 B 42	15A	EXISTING LOADS			0
BLDG:		164		FLOOR:		4		ROOM:		T403
						NEW TAG:				LPA-T4-42 (LP-4A)
RATINGS:		100A		120/208V		3 PHASE		4 WIRE		S.C.:
FEED FROM:		PANEL TAG:		BLDG #:		ROOM #:		BREAKER SIZE		FEEDER SIZE:
		09S-14-05-B1		164		151				

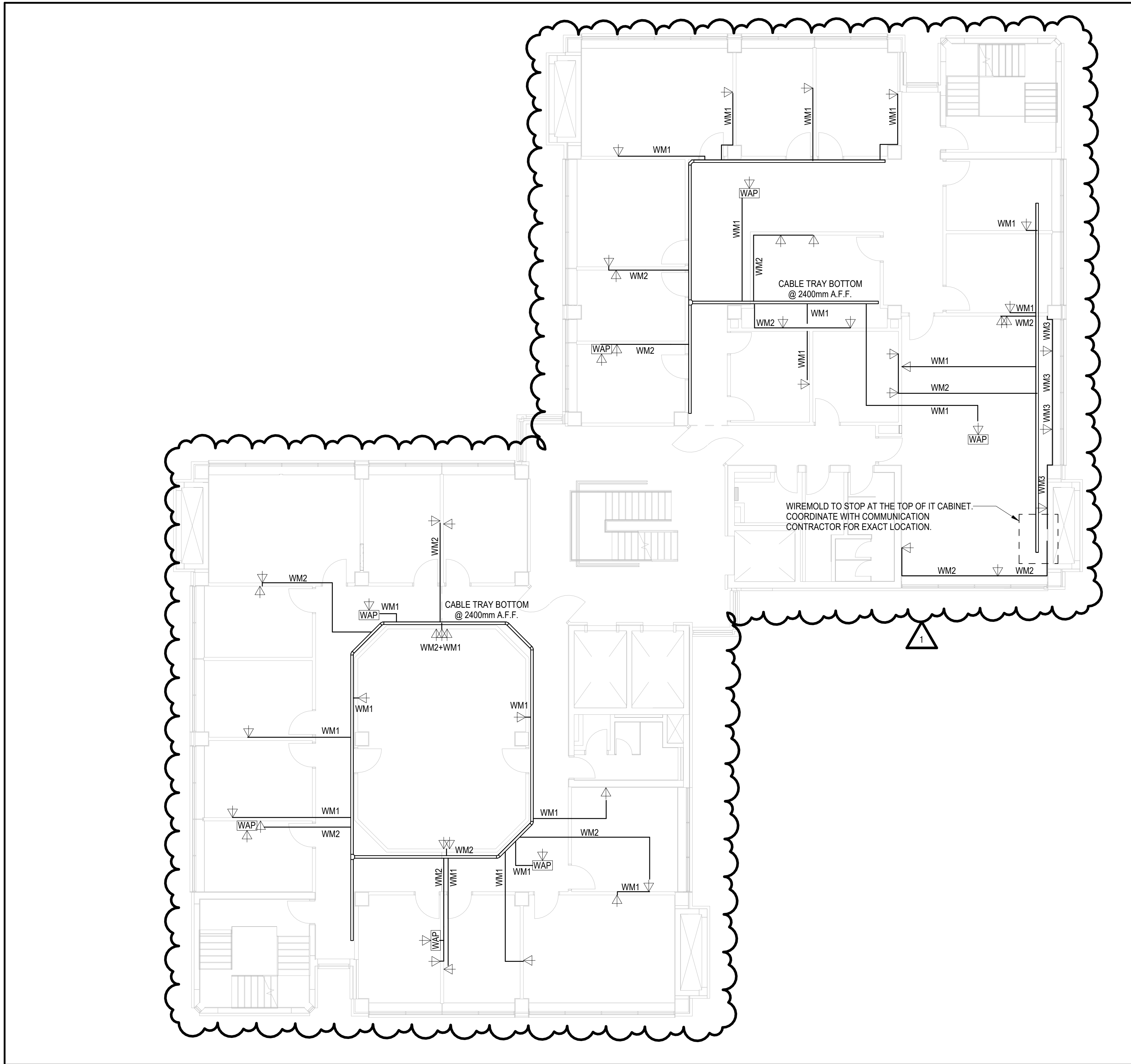
C:\Users\wang4422.AD\Documents\P164-25-078_E_26_jian.wang.KLUC.rvt 2026-01-30 3:59:48 PM



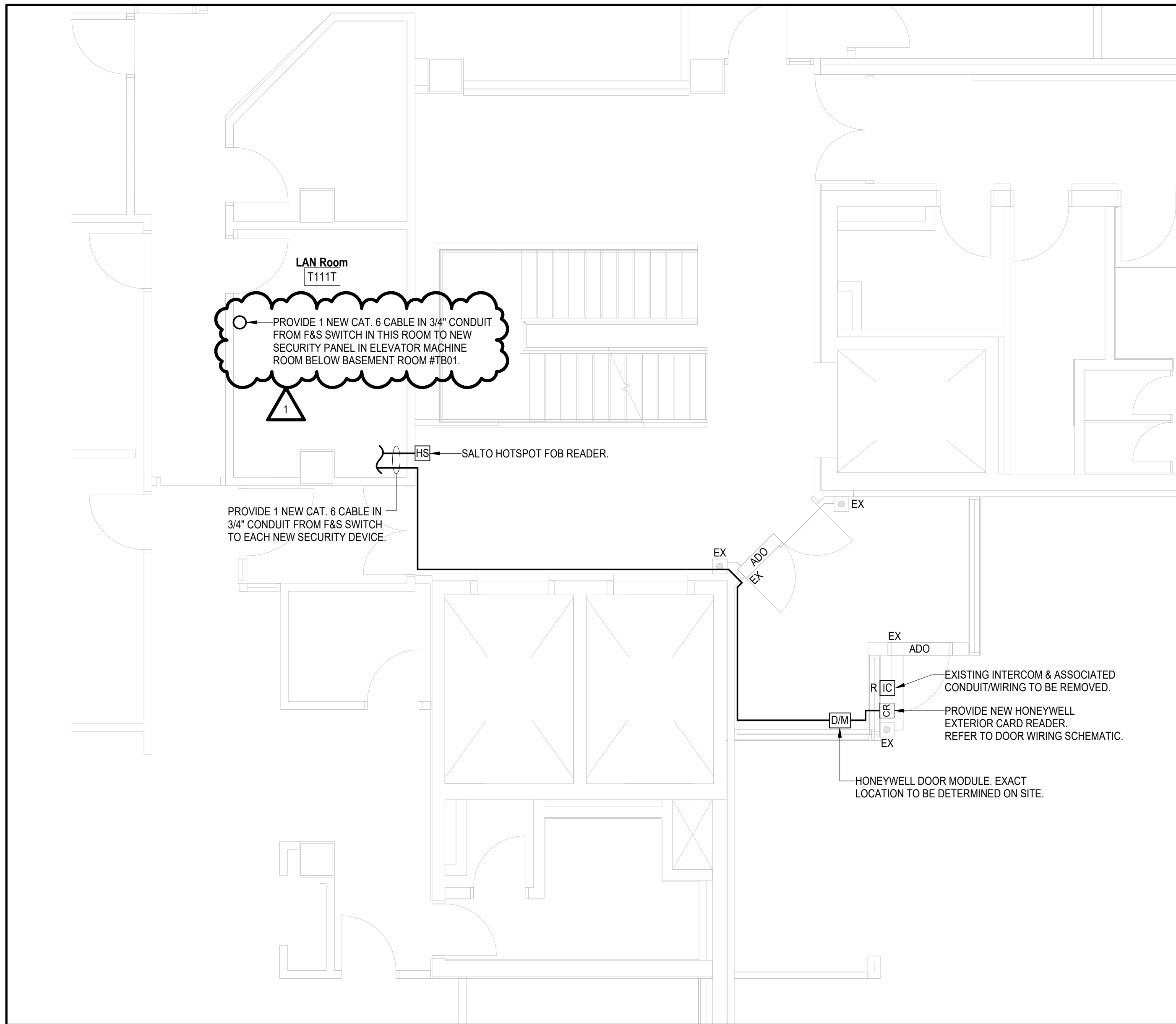
6 HONEYWELL EXTERIOR DOOR SECURITY WIRING SCHEMATIC
SCALE: NTS



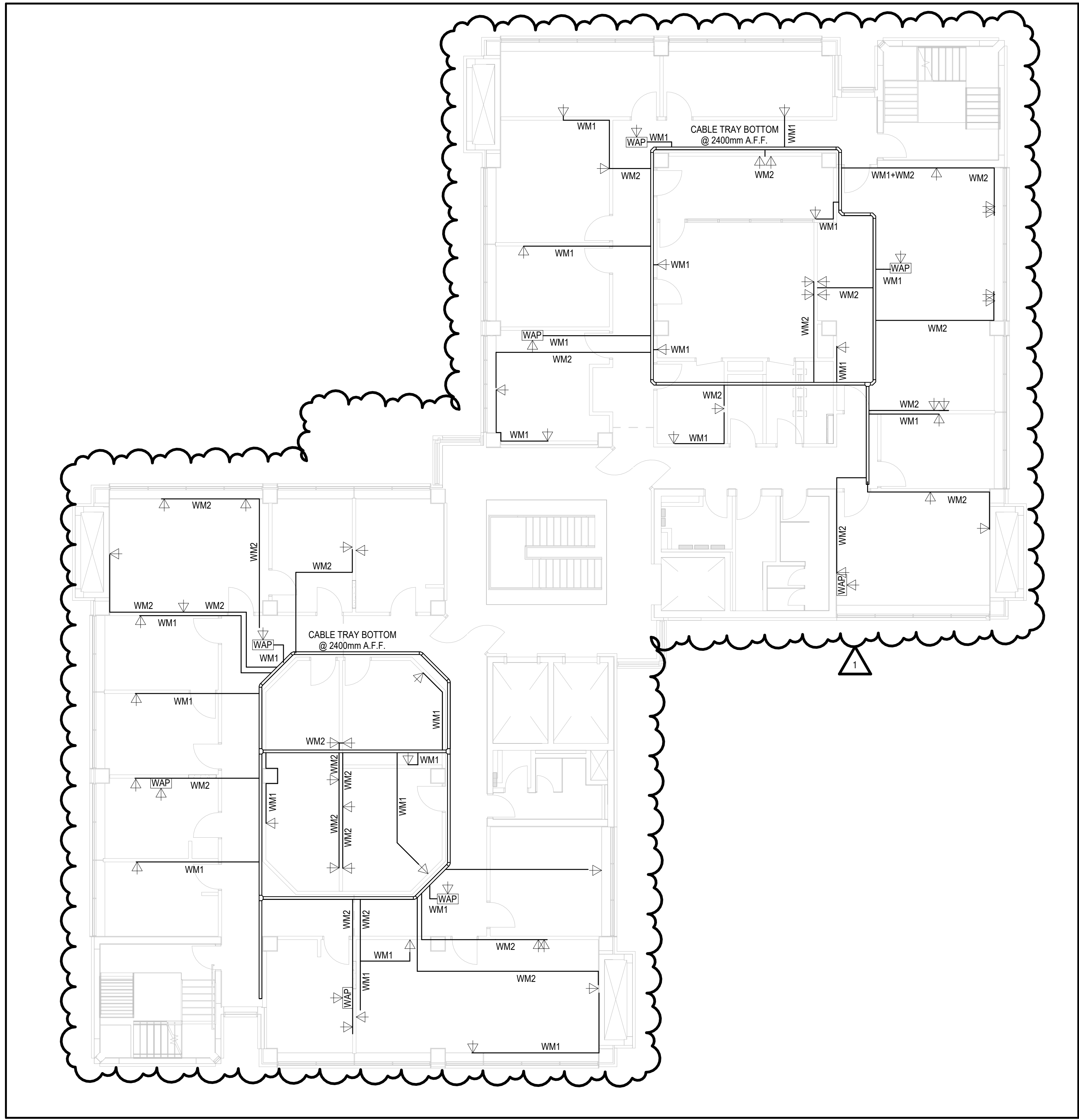
5 6TH FLOOR - MAIN ELECTRICAL CONDUIT & WIREMOLD LAYOUT
SCALE: 1: 100



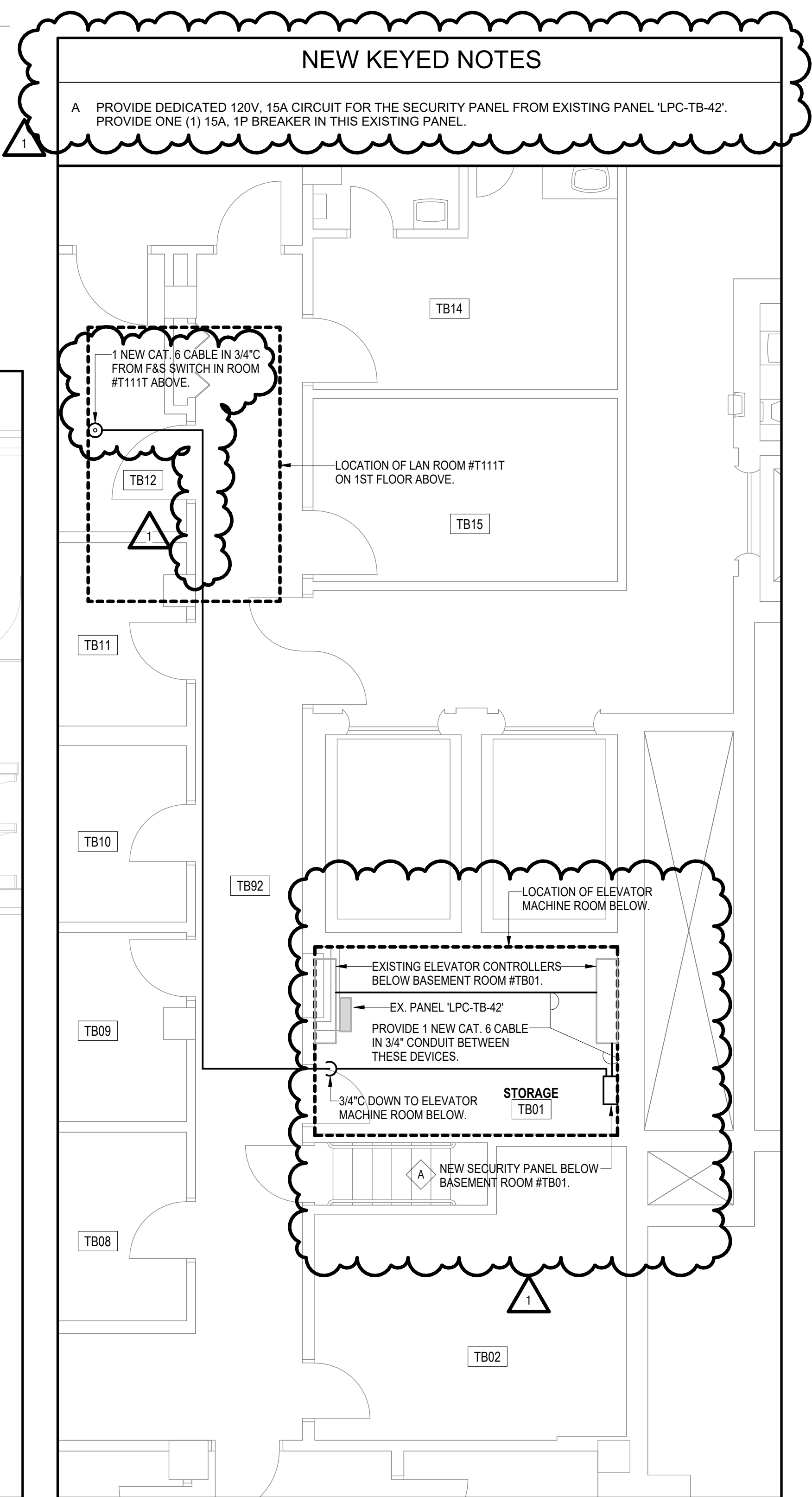
3 3RD FLOOR - MAIN ELECTRICAL CONDUIT & WIREMOLD LAYOUT
SCALE: 1: 100



2 1ST FLOOR PART PLAN - NEW DOOR SECURITY LAYOUT
SCALE: 1: 50



4 4TH FLOOR - MAIN ELECTRICAL CONDUIT & WIREMOLD LAYOUT
SCALE: 1: 100



1 BASEMENT PART PLAN - NEW ELEVATOR SECURITY LAYOUT
SCALE: 1: 50



University of Toronto
UNIVERSITY PLANNING,
DESIGN & CONSTRUCTION

Design & Engineering

255 McCaul Street, 4th Floor, Toronto, Ontario M5T 1W7

This drawing is the property of the University of Toronto, and must be returned upon completion of the work. All information shown on this drawing is for use on this specific project. Contractor must verify all dimensions on the job and report any discrepancies to the Architect before proceeding with the work.

1	ADDENDUM #1	2016-01-30
2	ISSUED FOR TENDER	2016-01-21
3	ISSUED FOR AS REVIEW	2016-01-16
4	ISSUED FOR PERMIT	2016-01-14
REV.	DESCRIPTION	DATE

KEY PLAN (NTS)	SEAL
----------------	------

PROJECT TITLE
UNIVERSITY OF TORONTO
Tower FOI Relocation

481 Spadina Ave
DRAWING SHEET TITLE
**ELECTRICAL RACEWAY
ROUTING & SECURITY
LAYOUT**

DRAWN BY: JW/GDP
REVIEWED BY: SG
UNIVERSITY PROJECT NUMBER: NORTH POINT

P164-25-078

DRAWING NUMBER
E504

REV. NUMBER
1